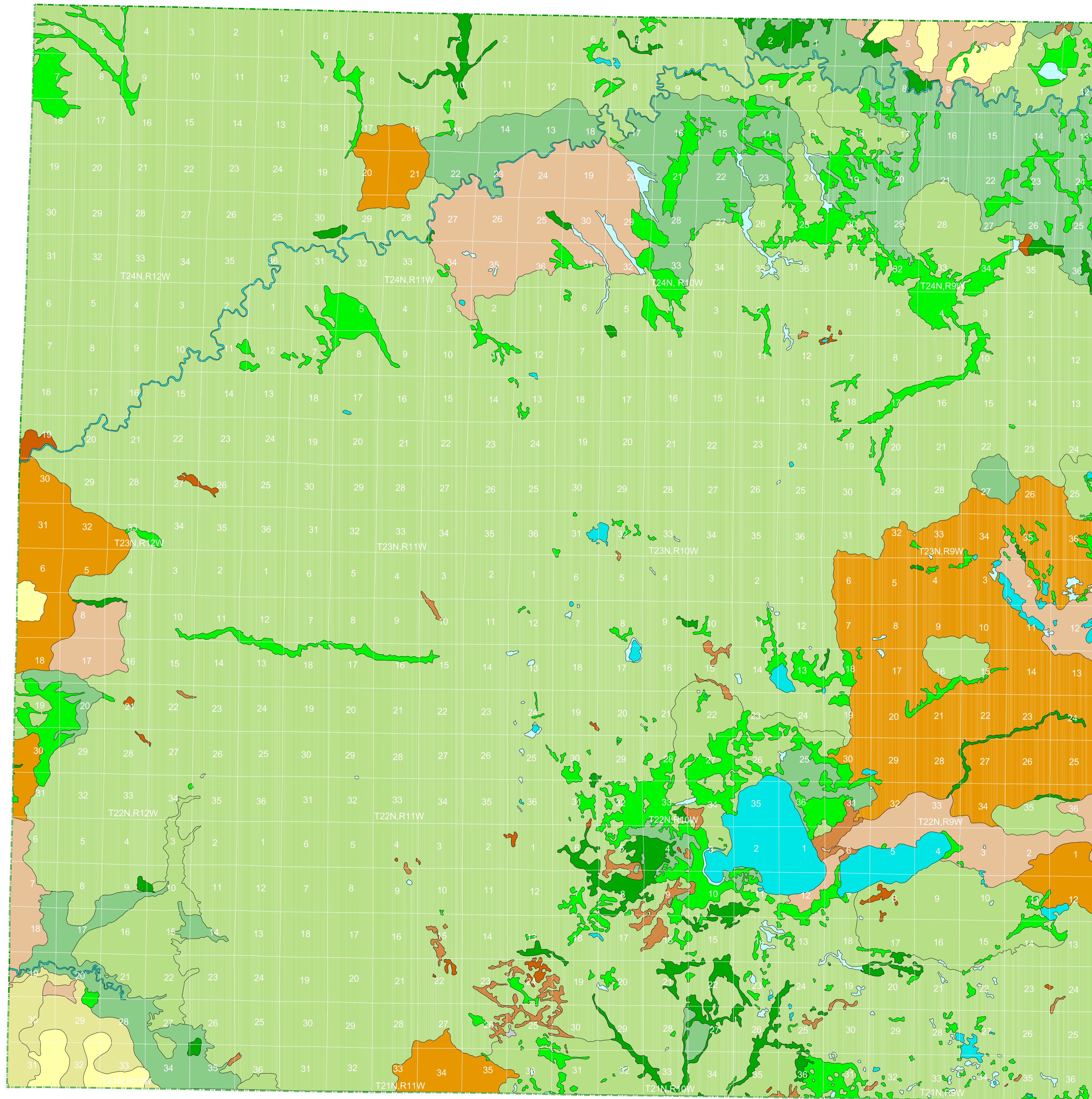


Vegetation circa 1800 of Wexford County, Michigan

An Interpretation of the General Land Office Surveys

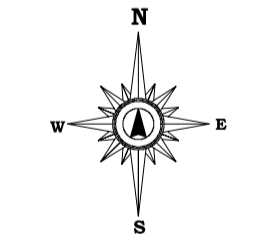
By P. J. Comer and D. A. Albert
Michigan Natural Features Inventory
1997



Legend

- ASPEN-BIRCH FOREST
- BEECH-SUGAR MAPLE FOREST
- BEECH-SUGAR MAPLE-HEMLOCK FOREST
- BLACK ASH SWAMP
- BLACK OAK BARREN
- CEDAR SWAMP
- GRASSLAND
- HEMLOCK-WHITE PINE FOREST
- HEMLOCK-YELLOW BIRCH FOREST
- JACK PINE-RED PINE FOREST
- LAKE/RIVER
- MIXED CONIFER SWAMP
- MIXED HARDWOOD SWAMP
- MIXED OAK FOREST
- MIXED OAK SAVANNA
- MIXED PINE-OAK FOREST
- MUSKEG/BOG
- OAK-HICKORY FOREST
- OAK-PINE BARREN
- PINE BARREN
- SAND DUNE
- SHRUB SWAMP/EMERGENT MARSH
- SPRUCE-FIR-CEDAR FOREST
- WET PRAIRIE
- WHITE PINE-MIXED HARDWOOD FOREST
- WHITE PINE-RED PINE FOREST
- WHITE PINE-WHITE OAK FOREST

= LAND COVER TYPE PRESENT ON THIS MAP



Scale 1:75,000



Map Projection: Lambert Conformal Conic

SOURCE: Comer, P.J., D.A. Albert, H.A. Wells, B.L. Hart, J.B. Raab, D.L. Price, D.M. Kashian, P.A. Comer, D.W. Schuen (Map Interpretation), M.B. Austin, T.R. Leibfried, K.M. Korroch, L. Prange-Gregory, J.G. Spitzley, C.J. DeLain, L.J. Scrimger, (Digital Map Production), 1995. Michigan's Presettlement Vegetation, as Interpreted from the General Land Office Surveys 1816-1856. Michigan Natural Features Inventory, Lansing, MI. Digital Map.

