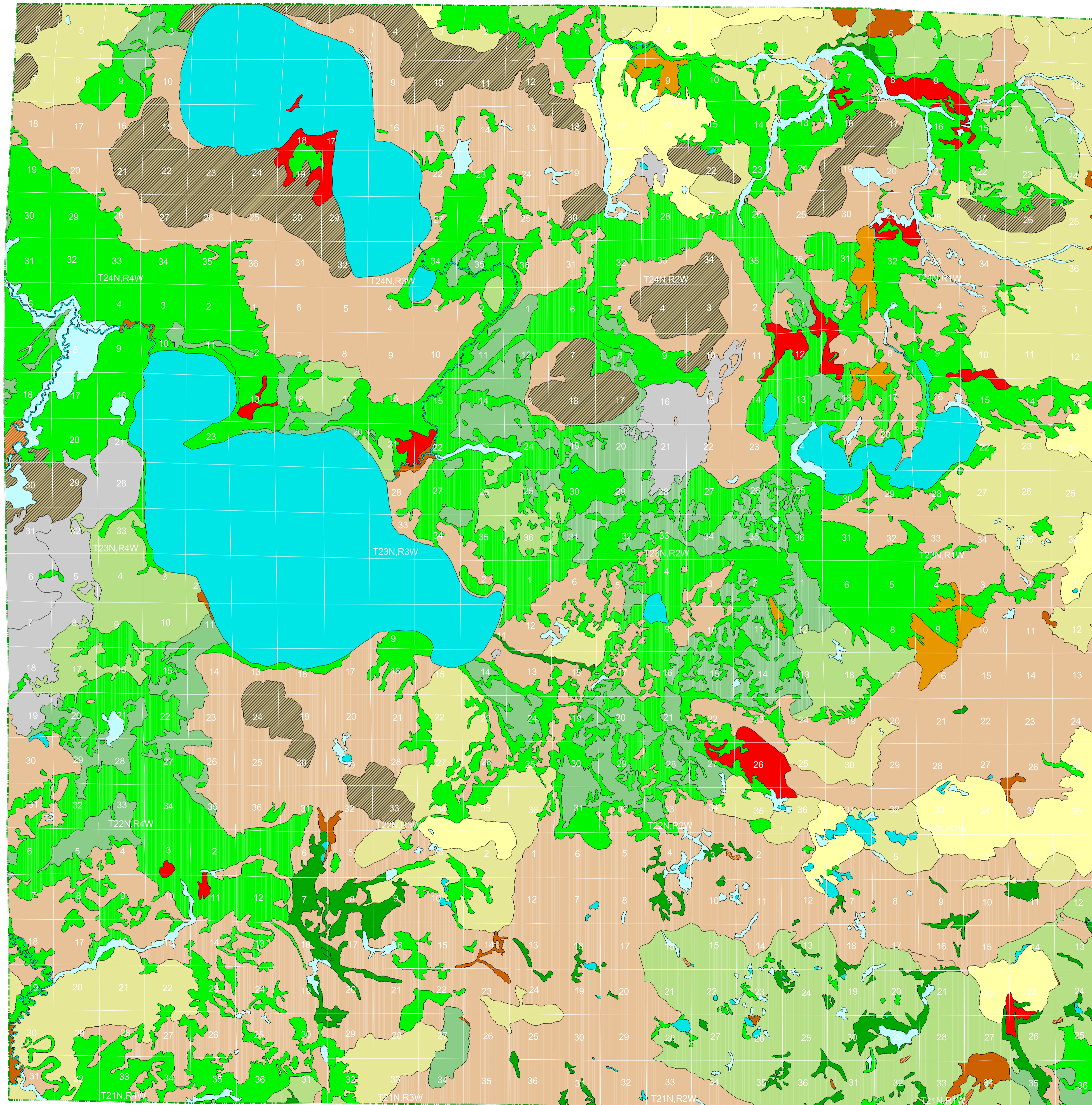


Vegetation circa 1800 of Roscommon County, Michigan

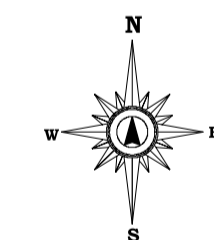
An Interpretation of the General Land Office Surveys

By P. J. Comer and D. A. Albert
Michigan Natural Features Inventory
1997



Legend

- ✓ ASPEN-BIRCH FOREST
 - ✓ BEECH-SUGAR MAPLE FOREST
 - ✓ BLACK ASH SWAMP
 - ✓ BLACK OAK BARREN
 - ✓ CEDAR SWAMP
 - ✓ GRASSLAND
 - ✓ HEMLOCK-WHITE PINE FOREST
 - ✓ HEMLOCK-YELLOW BIRCH FOREST
 - ✓ JACK PINE-RED PINE FOREST
 - ✓ LAKE/RIVER
 - ✓ MIXED CONIFER SWAMP
 - ✓ MIXED HARDWOOD SWAMP
 - ✓ MIXED OAK FOREST
 - ✓ MIXED OAK SAVANNA
 - ✓ MIXED PINE-OAK FOREST
 - ✓ MUSKEG/BOG
 - ✓ OAK-HICKORY FOREST
 - ✓ OAK-PINE BARREN
 - ✓ PINE BARREN
 - ✓ SAND DUNE
 - ✓ SHRUB SWAMP/EMERGENT MARSH
 - ✓ SPRUCE-FIR-CEDAR FOREST
 - ✓ WET PRAIRIE
 - ✓ WHITE PINE-MIXED HARDWOOD FOREST
 - ✓ WHITE PINE-RED PINE FOREST
 - ✓ WHITE PINE-WHITE OAK FOREST
- ✓ = LAND COVER TYPE PRESENT ON THIS MAP



Scale 1:75,000



Map Projection: Lambert Conformal Conic

SOURCE: Comer, P.J., D.A. Albert, H.A. Wells, B.L. Hart, J.B. Raab, D.L. Price, D.M. Kashian, R.A. Corner, D.W. Schuen (Map Interpretation), M.B. Austin, T.R. Leibfried, K.M. Korroch, L. Prange-Gregory, J.G. Spitzley, C.J. DeLain, L.J. Scrimger, (Digital Map Production). 1995.
Michigan's Presettlement Vegetation, as Interpreted from the General Land Office Surveys 1816-1856.
Michigan Natural Features Inventory, Lansing, MI. Digital Map.



MICHIGAN STATE UNIVERSITY
EXTENSION

