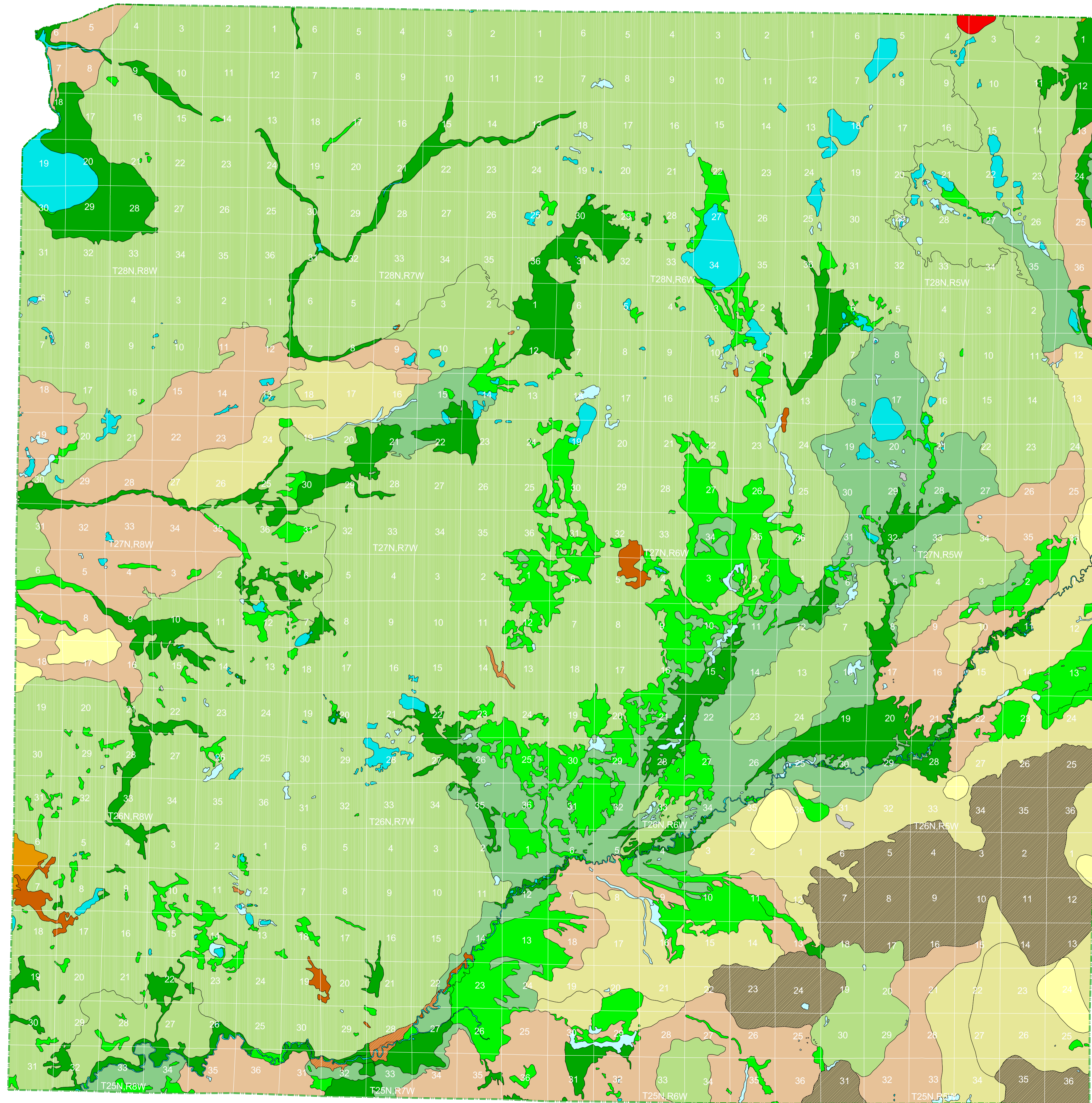


# Vegetation circa 1800 of Kalkaska County, Michigan

An Interpretation of the General Land Office Surveys

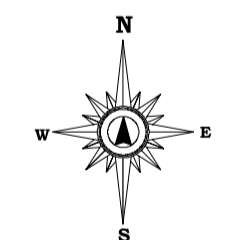
By P. J. Comer and D. A. Albert  
Michigan Natural Features Inventory  
1997



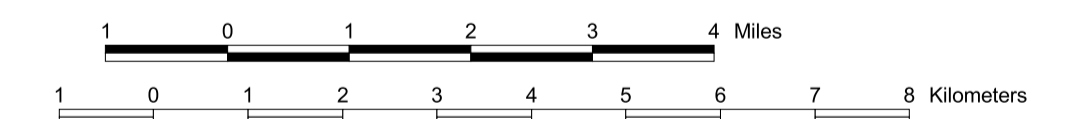
## Legend

- ✓ ASPEN-BIRCH FOREST
- ✓ BEECH-SUGAR MAPLE FOREST
- ✓ BEECH-SUGAR MAPLE-HEMLOCK FOREST
- ✓ BLACK ASH SWAMP
- ✓ BLACK OAK BARREN
- ✓ CEDAR SWAMP
- ✓ GRASSLAND
- ✓ HEMLOCK-WHITE PINE FOREST
- ✓ HEMLOCK-YELLOW BIRCH FOREST
- ✓ JACK PINE-RED PINE FOREST
- ✓ LAKE/RIVER
- ✓ MIXED CONIFER SWAMP
- ✓ MIXED HARDWOOD SWAMP
- ✓ MIXED OAK FOREST
- ✓ MIXED OAK SAVANNA
- ✓ MIXED PINE-OAK FOREST
- ✓ MUSKEG/BOG
- ✓ OAK-HICKORY FOREST
- ✓ OAK-PINE BARREN
- ✓ PINE BARREN
- ✓ SAND DUNE
- ✓ SHRUB SWAMP/EMERGENT MARSH
- ✓ SPRUCE-FIR-CEDAR FOREST
- ✓ WET PRAIRIE
- ✓ WHITE PINE-MIXED HARDWOOD FOREST
- ✓ WHITE PINE-RED PINE FOREST
- ✓ WHITE PINE-WHITE OAK FOREST

✓ = LAND COVER TYPE PRESENT ON THIS MAP



Scale 1:80,000



Map Projection: Lambert Conformal Conic

SOURCE: Comer, P.J., D.A. Albert, H.A. Wells, B.L. Hart, J.B. Raab, D.L. Price, D.M. Kashian, R.A. Comer, D.W. Schuen (Map Interpretation), M.B. Austin, T.R. Leibfried, K.M. Koroch, L. Prange-Gregory, J.G. Spitzley, C.J. DeLain, L.J. Springer, (Digital Map Production). 1995. Michigan's Presettlement Vegetation, as Interpreted from the General Land Office Surveys 1816-1856. Michigan Natural Features Inventory, Lansing, MI. Digital Map.

