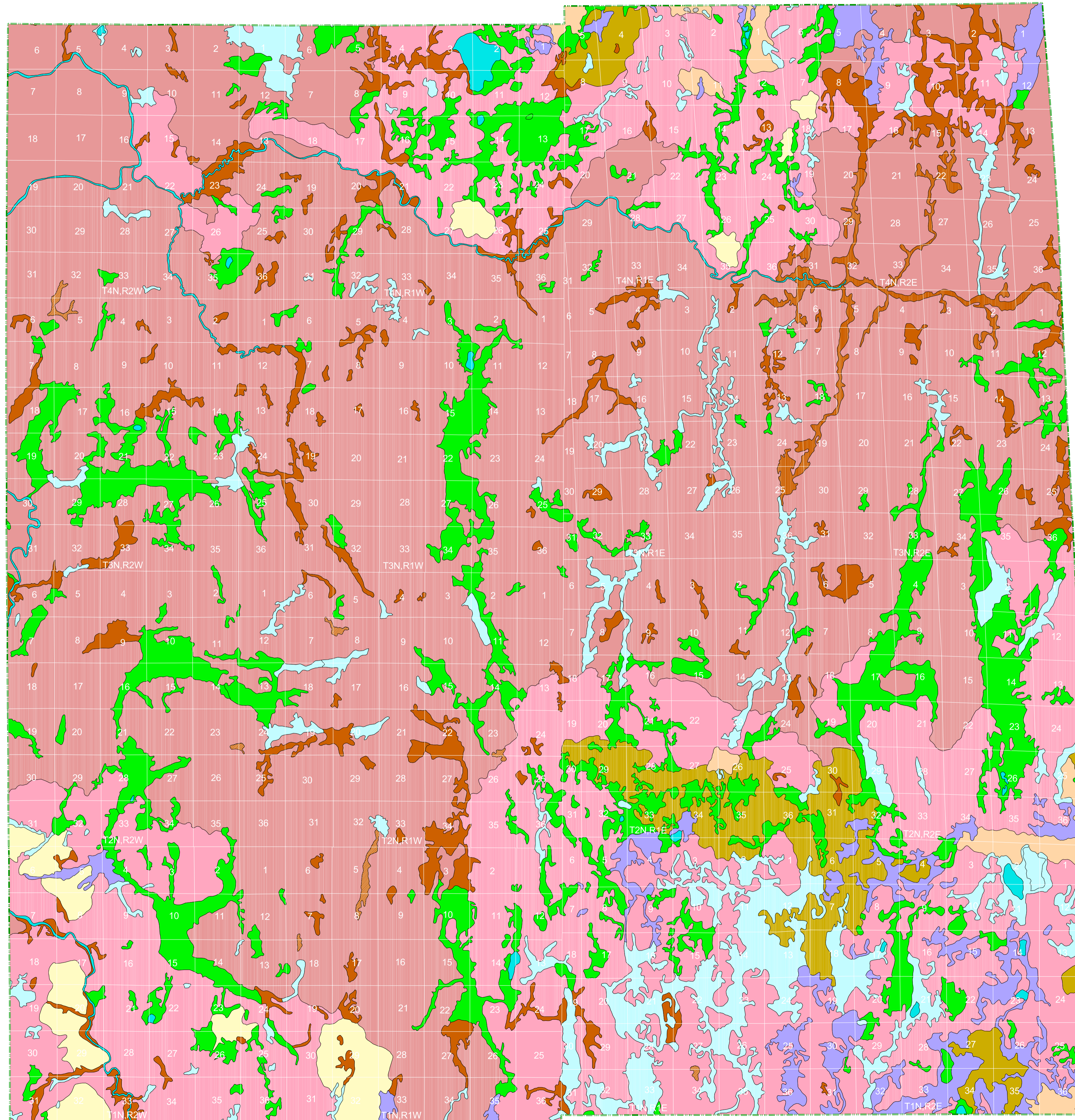


Vegetation circa 1800 of Ingham County, Michigan

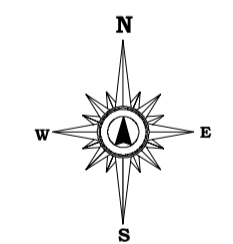
An Interpretation of the General Land Office Surveys

By P. J. Comer and D. A. Albert
Michigan Natural Features Inventory
1997

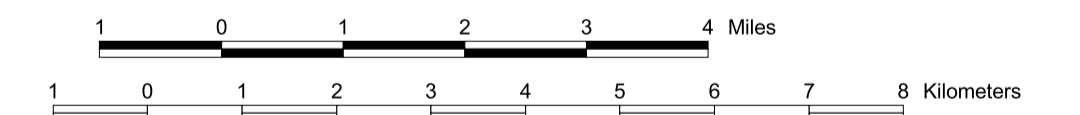


Legend

- ASPEN-BIRCH FOREST
 - BEECH-SUGAR MAPLE FOREST
 - BEECH-SUGAR MAPLE-HEMLOCK FOREST
 - BLACK ASH SWAMP
 - BLACK OAK BARREN
 - CEDAR SWAMP
 - GRASSLAND
 - HEMLOCK-WHITE PINE FOREST
 - HEMLOCK-YELLOW BIRCH FOREST
 - JACK PINE-RED PINE FOREST
 - LAKE/RIVER
 - MIXED CONIFER SWAMP
 - MIXED HARDWOOD SWAMP
 - MIXED OAK FOREST
 - MIXED OAK SAVANNA
 - MIXED PINE-OAK FOREST
 - MUSKEG/BOG
 - OAK-HICKORY FOREST
 - OAK-PINE BARREN
 - PINE BARREN
 - SAND DUNE
 - SHRUB SWAMP/EMERGENT MARSH
 - SPRUCE-FIR-CEDAR FOREST
 - WET PRAIRIE
 - WHITE PINE-MIXED HARDWOOD FOREST
 - WHITE PINE-RED PINE FOREST
 - WHITE PINE-WHITE OAK FOREST
- = LAND COVER TYPE PRESENT ON THIS MAP



Scale 1:80,000



Map Projection: Lambert Conformal Conic

SOURCE: Comer, P.J., D.A. Albert, H.A. Wells, B.L. Hart, J.B. Raab, D.L. Price, D.M. Kashian, R.A. Comer, D.W. Schuen (Map Interpretation), M.B. Austin, T.R. Leibfried, K.M. Koroch, L. Prange-Gregory, J.G. Spitzley, C.J. Delain, L.J. Springer, (Digital Map Production), 1995. Michigan's Presettlement Vegetation, as Interpreted from the General Land Office Surveys 1816-1856. Michigan Natural Features Inventory, Lansing, MI. Digital Map.



MICHIGAN STATE UNIVERSITY
EXTENSION

