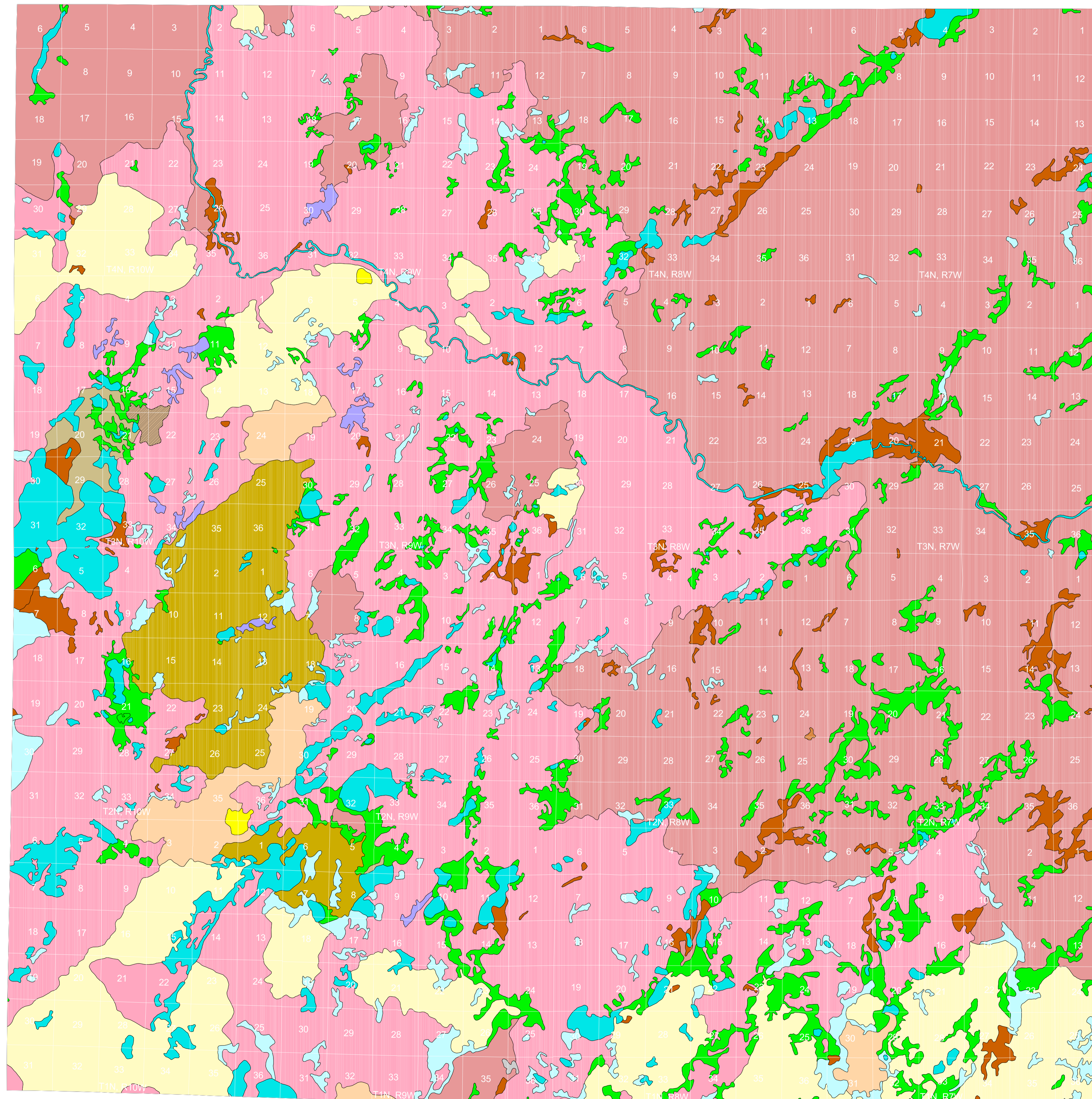


# Vegetation circa 1800 of Barry County, Michigan

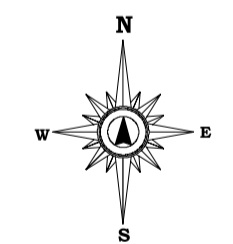
An Interpretation of the General Land Office Surveys

By P. J. Comer and D. A. Albert  
Michigan Natural Features Inventory  
1997

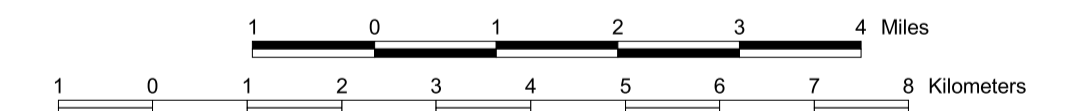


## Legend

- ✓ ASPEN-BIRCH FOREST
  - ✓ BEECH-SUGAR MAPLE FOREST
  - ✓ BEECH-SUGAR MAPLE-HEMLOCK FOREST
  - ✓ BLACK ASH SWAMP
  - ✓ BLACK OAK BARREN
  - ✓ CEDAR SWAMP
  - ✓ GRASSLAND
  - ✓ HEMLOCK-WHITE PINE FOREST
  - ✓ HEMLOCK-YELLOW BIRCH FOREST
  - ✓ JACK PINE-RED PINE FOREST
  - ✓ LAKE/RIVER
  - ✓ MIXED CONIFER SWAMP
  - ✓ MIXED HARDWOOD SWAMP
  - ✓ MIXED OAK FOREST
  - ✓ MIXED OAK SAVANNA
  - ✓ MIXED PINE-OAK FOREST
  - ✓ MUSKEG/BOG
  - ✓ OAK-HICKORY FOREST
  - ✓ OAK-PINE BARREN
  - ✓ PINE BARREN
  - ✓ SAND DUNE
  - ✓ SHRUB SWAMP/EMERGENT MARSH
  - ✓ SPRUCE-FIR-CEDAR FOREST
  - ✓ WET PRAIRIE
  - ✓ WHITE PINE-MIXED HARDWOOD FOREST
  - ✓ WHITE PINE-RED PINE FOREST
  - ✓ WHITE PINE-WHITE OAK FOREST
- ✓ = LAND COVER TYPE PRESENT ON THIS MAP



Scale 1:80,000



Map Projection: Lambert Conformal Conic

SOURCE: Comer, P.J., D.A. Albert, H.A. Wells, B.L. Hart, J.B. Raab, D.L. Price, D.M. Kashian, R.A. Comer, D.W. Schuen (Map Interpretation), M.B. Austin, T.R. Leibfried, K.M. Koroch, L. Prange-Gregory, J.G. Spitzley, C.J. DeLain, L.J. Springer, (Digital Map Production). 1995. Michigan's Presettlement Vegetation, as Interpreted from the General Land Office Surveys 1816-1856. Michigan Natural Features Inventory, Lansing, MI. Digital Map.



MICHIGAN STATE UNIVERSITY  
EXTENSION

