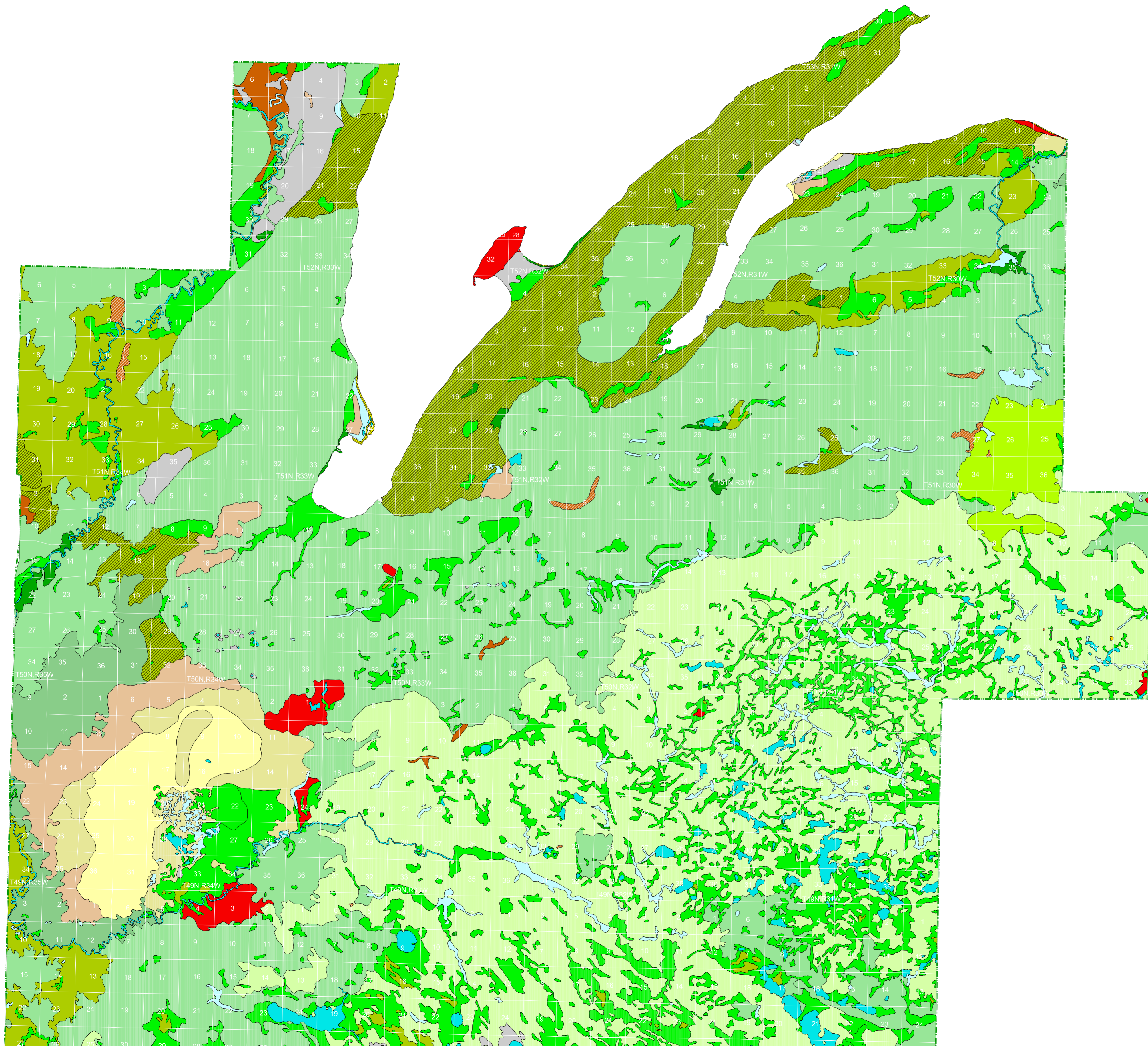


Vegetation circa 1800 of Baraga County, Michigan NORTH PART

An Interpretation of the General Land Office Surveys

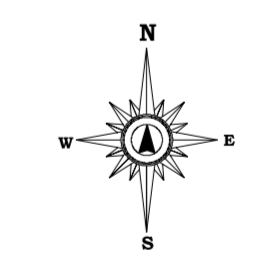
By P. J. Comer and D. A. Albert
Michigan Natural Features Inventory
1997



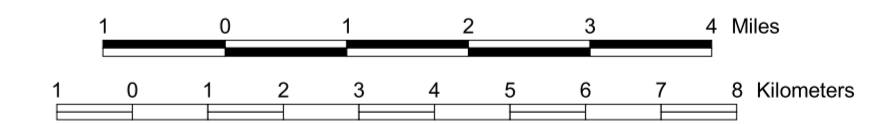
Legend

- ✓ ASPEN-BIRCH FOREST
- ✓ BEECH-SUGAR MAPLE-HEMLOCK FOREST
- ✓ BLACK ASH SWAMP
- ✓ CEDAR SWAMP
- ✓ EXPOSED BEDROCK
- ✓ HEMLOCK-WHITE PINE FOREST
- ✓ HEMLOCK-YELLOW BIRCH FOREST
- ✓ JACK PINE-RED PINE FOREST
- ✓ LAKE/RIVER
- ✓ MIXED CONIFER SWAMP
- ✓ MIXED HARDWOOD SWAMP
- ✓ MIXED PINE-OAK FOREST
- ✓ MUSKEG/BOG
- ✓ OAK-PINE BARREN
- ✓ PINE BARREN
- ✓ SAND DUNE
- ✓ SHRUB SWAMP/EMERGENT MARSH
- ✓ SPRUCE-FIR-CEDAR FOREST
- ✓ SUGAR MAPLE-BASSWOOD FOREST
- ✓ SUGAR MAPLE-HEMLOCK FOREST
- ✓ SUGAR MAPLE-YELLOW BIRCH FOREST
- ✓ WET PRAIRIE
- ✓ WHITE PINE-MIXED HARDWOOD FOREST
- ✓ WHITE PINE-RED PINE FOREST

✓ = LAND COVER TYPE PRESENT ON THIS MAP



Scale 1:100,000



Map Projection: Lambert Conformal Conic

SOURCE: Comer, P.J., D.A. Albert, H.A. Wells, B.L. Hart, J.B. Raab, D.L. Price, D.M. Kashian, R.A. Comer, D.W. Schuen (Map Interpretation), M.B. Austin, T.R. Leibfried, K.M. Korroch, L. Prange-Gregory, J.G. Spitzley, C.J. DeLain, L.J. Scrimger, (Digital Map Production), 1995.
Michigan's Presettlement Vegetation, as Interpreted from the General Land Office Surveys 1816-1856.
Michigan Natural Features Inventory, Lansing, MI. Digital Map.

