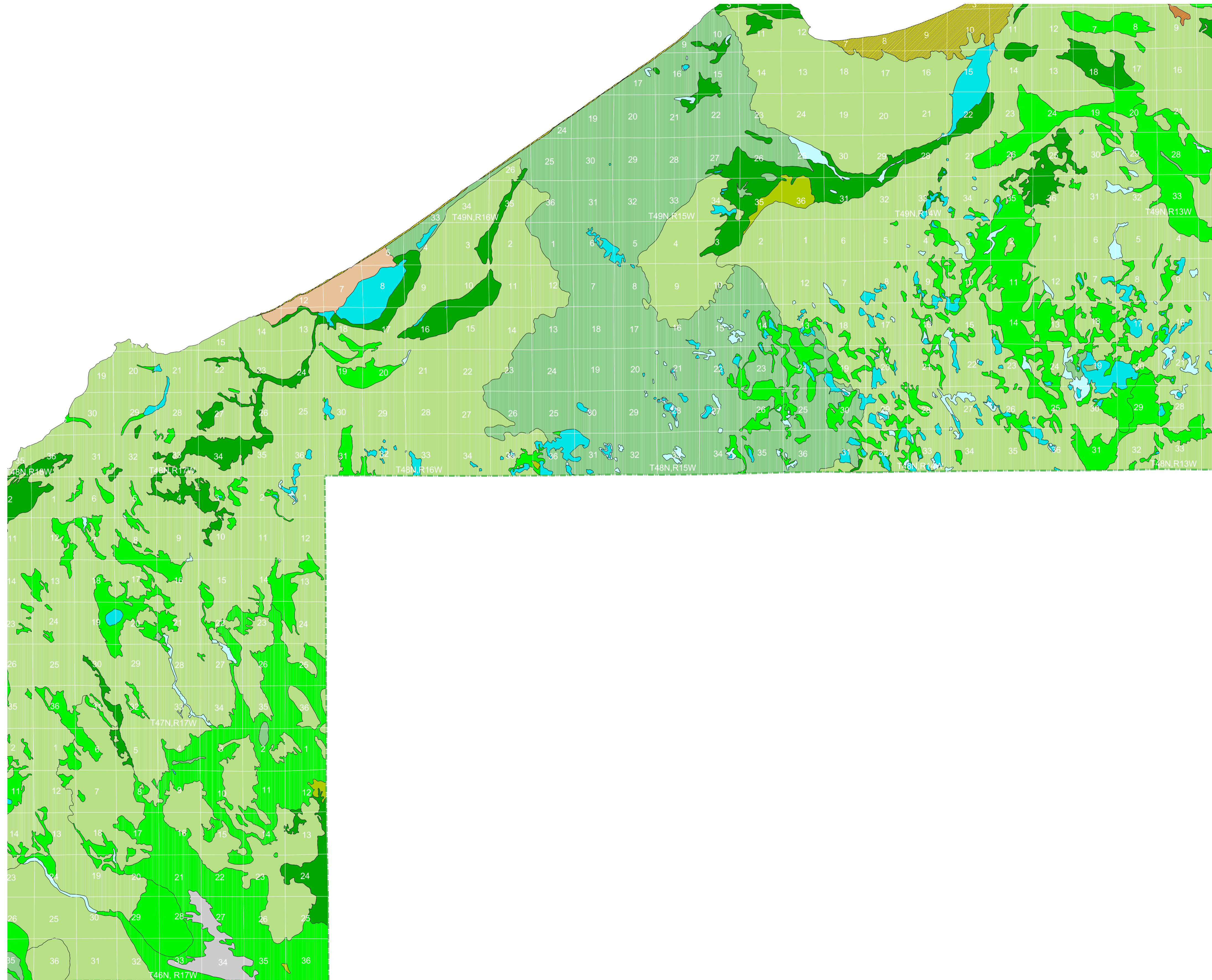


# Vegetation circa 1800 of Alger County, Michigan EAST PART

An Interpretation of the General Land Office Surveys

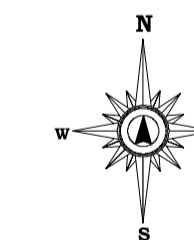
By P. J. Comer and D. A. Albert  
Michigan Natural Features Inventory  
1997



## Legend

- ✓ ASPEN-BIRCH FOREST
- ✓ BEECH-SUGAR MAPLE-HEMLOCK FOREST
- ✓ BLACK ASH SWAMP
- ✓ CEDAR SWAMP
- ✓ EXPOSED BEDROCK
- ✓ HEMLOCK-WHITE PINE FOREST
- ✓ HEMLOCK-YELLOW BIRCH FOREST
- ✓ JACK PINE-RED PINE FOREST
- ✓ LAKE/RIVER
- ✓ MIXED CONIFER SWAMP
- ✓ MIXED HARDWOOD SWAMP
- ✓ MIXED PINE-OAK FOREST
- ✓ MUSKEG/BOG
- ✓ OAK-PINE BARREN
- ✓ PINE BARREN
- ✓ SAND DUNE
- ✓ SHRUB SWAMP/EMERGENT MARSH
- ✓ SPRUCE-FIR-CEDAR FOREST
- ✓ SUGAR MAPLE-BASSWOOD FOREST
- ✓ SUGAR MAPLE-HEMLOCK FOREST
- ✓ SUGAR MAPLE-YELLOW BIRCH FOREST
- ✓ WET PRAIRIE
- ✓ WHITE PINE-MIXED HARDWOOD FOREST
- ✓ WHITE PINE-RED PINE FOREST

✓ = LAND COVER TYPE PRESENT ON THIS MAP



Scale 1:80,000



Map Projection: Lambert Conformal Conic

SOURCE: Comer, P.J., D.A. Albert, H.A. Wells, B.L. Hart, J.B. Raab, D.L. Price, D.M. Kashian, R.A. Comer, D.W. Schuen (Map Interpretation), M.B. Austin, T.R. Leibfreid, K.M. Korroch, L. Prange-Gregory, J.G. Spitzley, C.J. DeLain, L.J. Scrimger, (Digital Map Production), 1995.  
Michigan's Presettlement Vegetation, as Interpreted from the General Land Office Surveys 1816-1856.  
Michigan Natural Features Inventory, Lansing, MI. Digital Map.



MICHIGAN STATE  
UNIVERSITY  
EXTENSION

