

Natural Community Surveys for Forest Resource Division Lands 2017



Prepared by:
Joshua G. Cohen

Michigan Natural Features Inventory
P.O. Box 13036
Lansing, MI 48901-3036

For:
Michigan Department of Natural Resources
Forest Resources Division

September 30, 2017

Report Number 2017-09





Rocking Chair Lakes (Island Lake) mesic northern forest. Photo by Aaron P. Kortenhoven.

Suggested Citation:

Cohen, J.G. 2017. Natural Community Surveys of Forest Resource Division Lands 2017. Michigan Natural Features Inventory. Report Number 2017-09, Lansing, MI. 56 pp.

Cover Photo: Rocking Chair Lakes (Island Lake) mesic northern forest, Gwinn Forest Management Unit. Photo by Aaron P. Kortenhoven.

Copyright 2017 Michigan State University Board of Trustees. Michigan State University Extension programs and materials are open to all without regard to race, color, natural origin, gender, religion, age, disability, political beliefs, sexual orientation, marital status, or family status.

Funding for this project was provided by the Michigan Department of Natural Resources (DNR) Forest Resources Division (FRD). We express our sincere gratitude to the numerous DNR staff that helped administer and guide this project including Keith Kintigh, David Price, and Debbie Begalle. In addition, the following DNR staff assisted MNFI ecologists with field surveys: Jason Caron, Tim Greco, Rick-James Hill, Brian Piccolo, Tricia St. Pierre, and John Scheele. For their support and assistance throughout this project, we thank our MNFI colleagues, especially Aaron Kortenhoven, Jesse Lincoln, Clay Wilton, Helen Enander, Rebecca Rogers, Kraig Korroch, Nancy Toben, and Brian Klatt.

Atlanta Compartment 12

Surveyed additional swamp adjacent to Sage Lake rich conifer swamp (EO ID 15952). Modified boundary of element occurrence by increasing the acreage of mapped rich conifer swamp. Confirmed element occurrence rank of BC.



Sage Lake rich conifer swamp. Photos by Joshua G. Cohen.





2016 aerial photograph of Sage Lake rich conifer swamp.

Atlanta Compartments 89 and 92

Surveyed Squaw Bay wooded dune and swale complex (EO ID 403). Modified boundary of mapped wooded dune and swale complex using recent aerial imagery and survey data to account for recent logging activity. Downgraded element occurrence rank from BC to C.



Surveyed the eastern margin of the mapped complex. Following surveys, excluded recently harvested uplands that were mapped as part of Squaw Bay wooded dune and swale complex. Photo by Joshua G. Cohen.



2016 aerial photograph of Squaw Bay wooded dune and swale complex.

Atlanta Compartments 140 and 141

Surveyed Grand Lake Glade limestone bedrock glade (EO ID 6511). Modified boundary of element occurrence by increasing the acreage of mapped limestone bedrock glade. Downgraded element occurrence rank from BC to C due to invasive species encroachment.



Grand Lake Glade limestone bedrock glade with dwarf lake iris in the foreground of the picture below. Photos by Joshua G. Cohen.





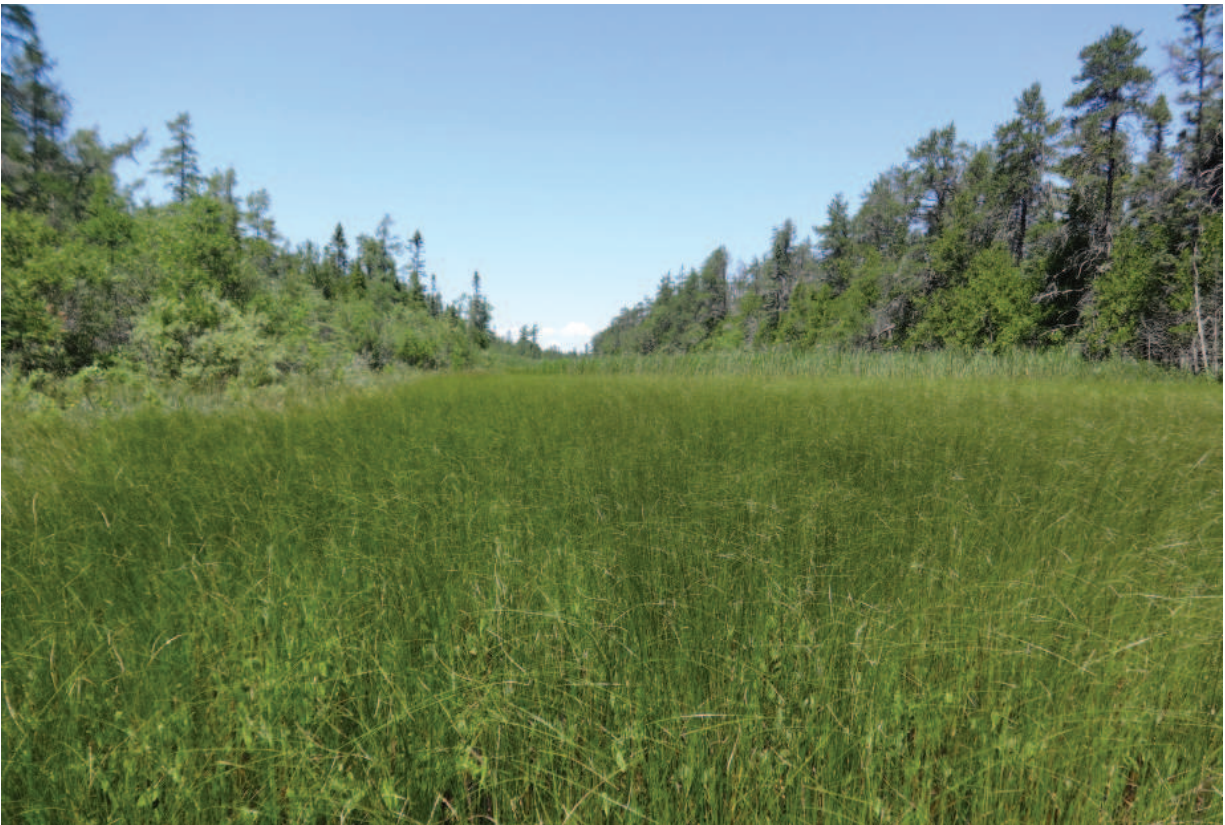
2016 aerial photograph of Grand Lake Glade limestone bedrock glade.

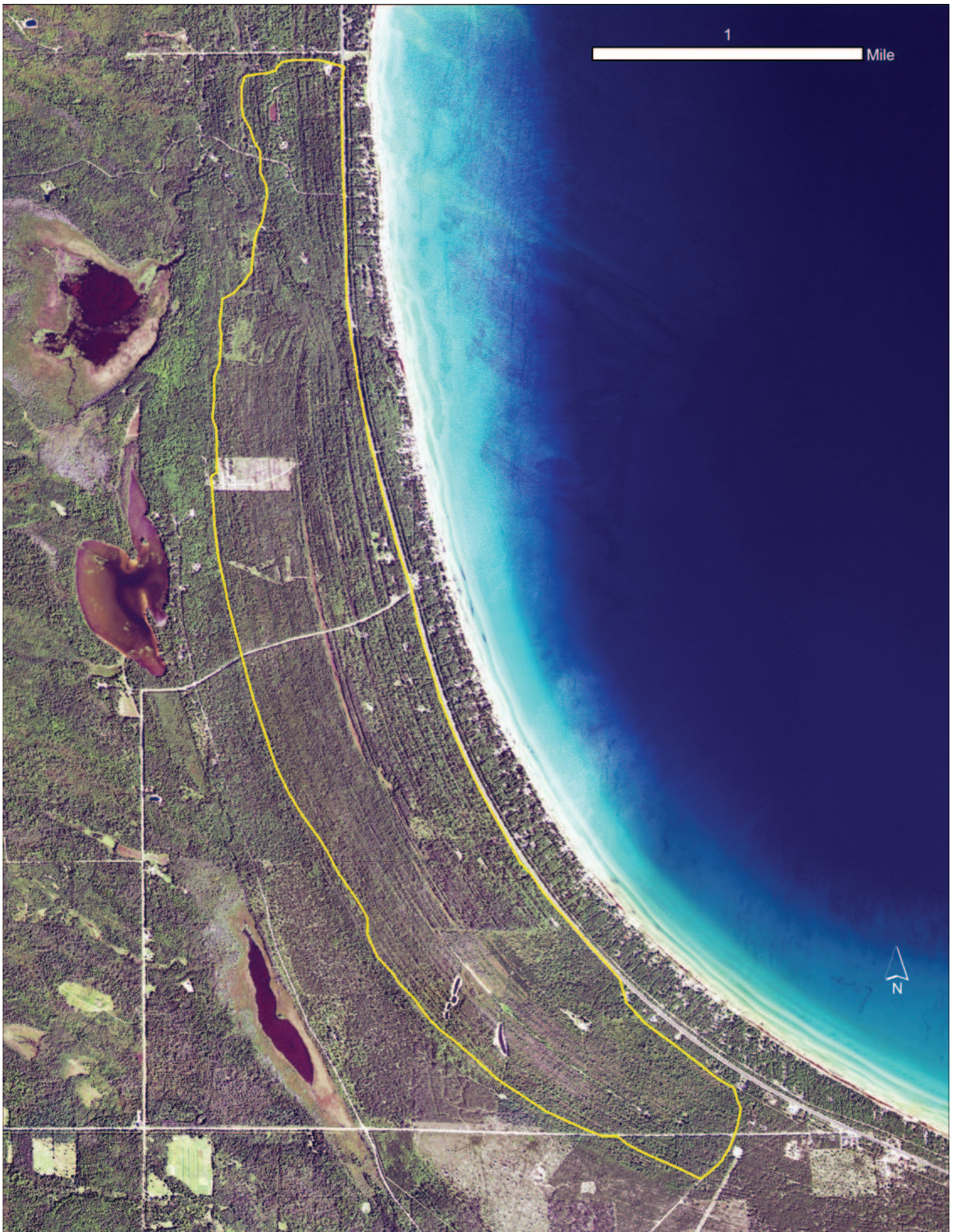
Atlanta Compartment 153, 154, and 161

Surveyed Hammond Bay wooded dune and swale complex (EO ID 11806). Modified boundary of mapped wooded dune and swale complex using recent aerial imagery and survey data to account for recent logging activity. Confirmed element occurrence rank of C.



Hammond Bay wooded dune and swale complex. Photos by Joshua G. Cohen.





2016 aerial photograph of Hammond Bay wooded dune and swale complex.

Atlanta Compartment 175

Surveyed Hoop Lake Bog (EO ID 4809). Modified boundary of element occurrence and confirmed element occurrence rank of C.



Hoop Lake Bog. Photos by Joshua G. Cohen.





2016 aerial photograph of Hoop Lake Bog.

Cadillac Compartment 25

Surveyed 40th Street oak-pine barrens (EO ID 7283). Modified boundary of element occurrence and confirmed element occurrence rank of C.



40th Street oak-pine barrens. Photo by Joshua G. Cohen.



2016 aerial photograph of 40th Street oak-pine barrens.

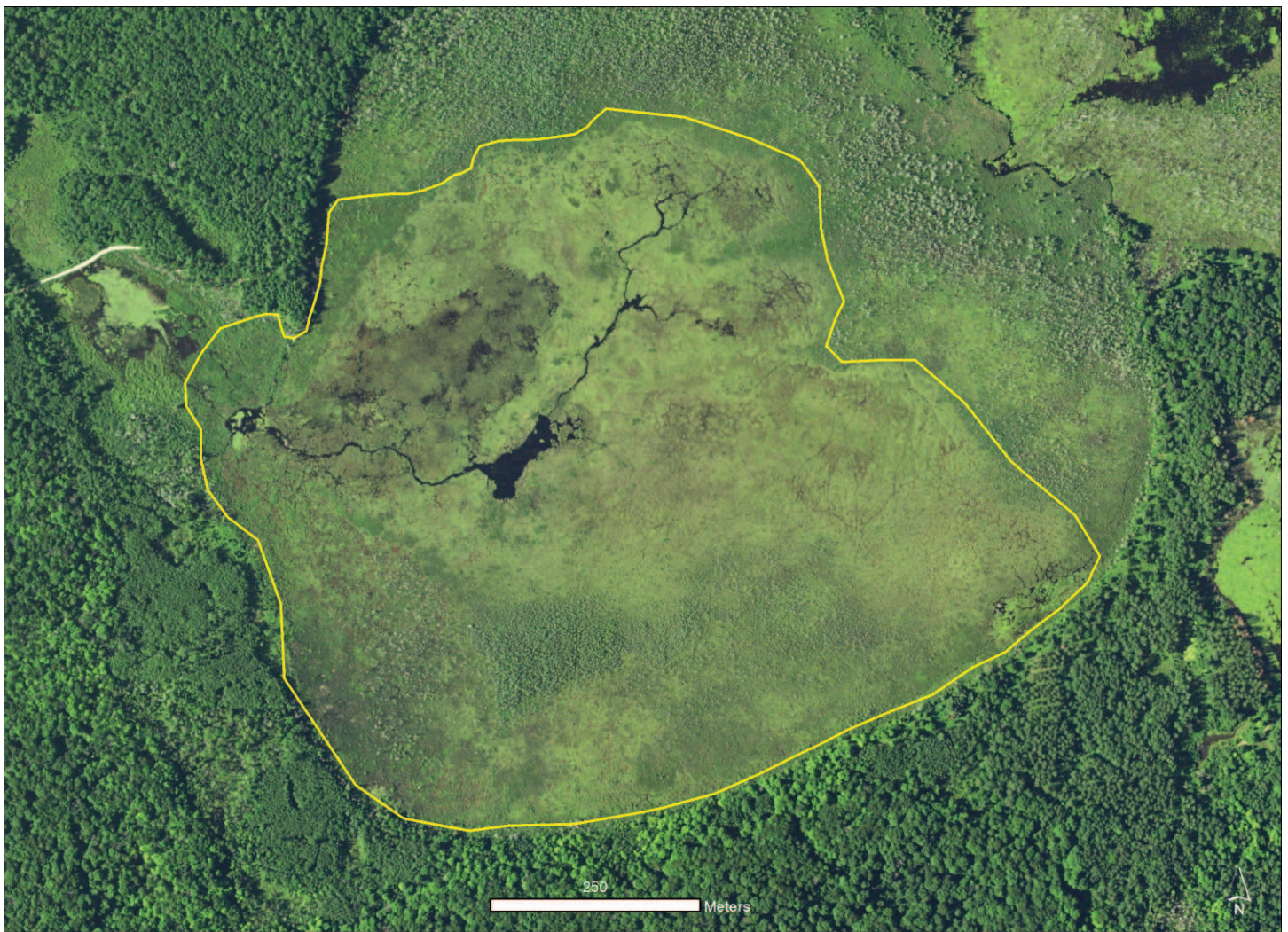
Cadillac Compartment 126

Surveyed Fife Lake Creek northern wet meadow (EO ID 5043). Modified boundary of element occurrence and confirmed element occurrence rank of B.



Fife Lake Creek northern wet meadow. Photos by Joshua G. Cohen.





2016 aerial photograph of Fife Lake Creek northern wet meadow.

Cadillac Compartment 141

Surveyed Long Lake northern wet meadow (EO ID 6427). Modified boundary of element occurrence and confirmed element occurrence rank of C.



Long Lake northern wet meadow. Photos by Joshua G. Cohen.





2016 aerial photograph of Long Lake northern wet meadow.

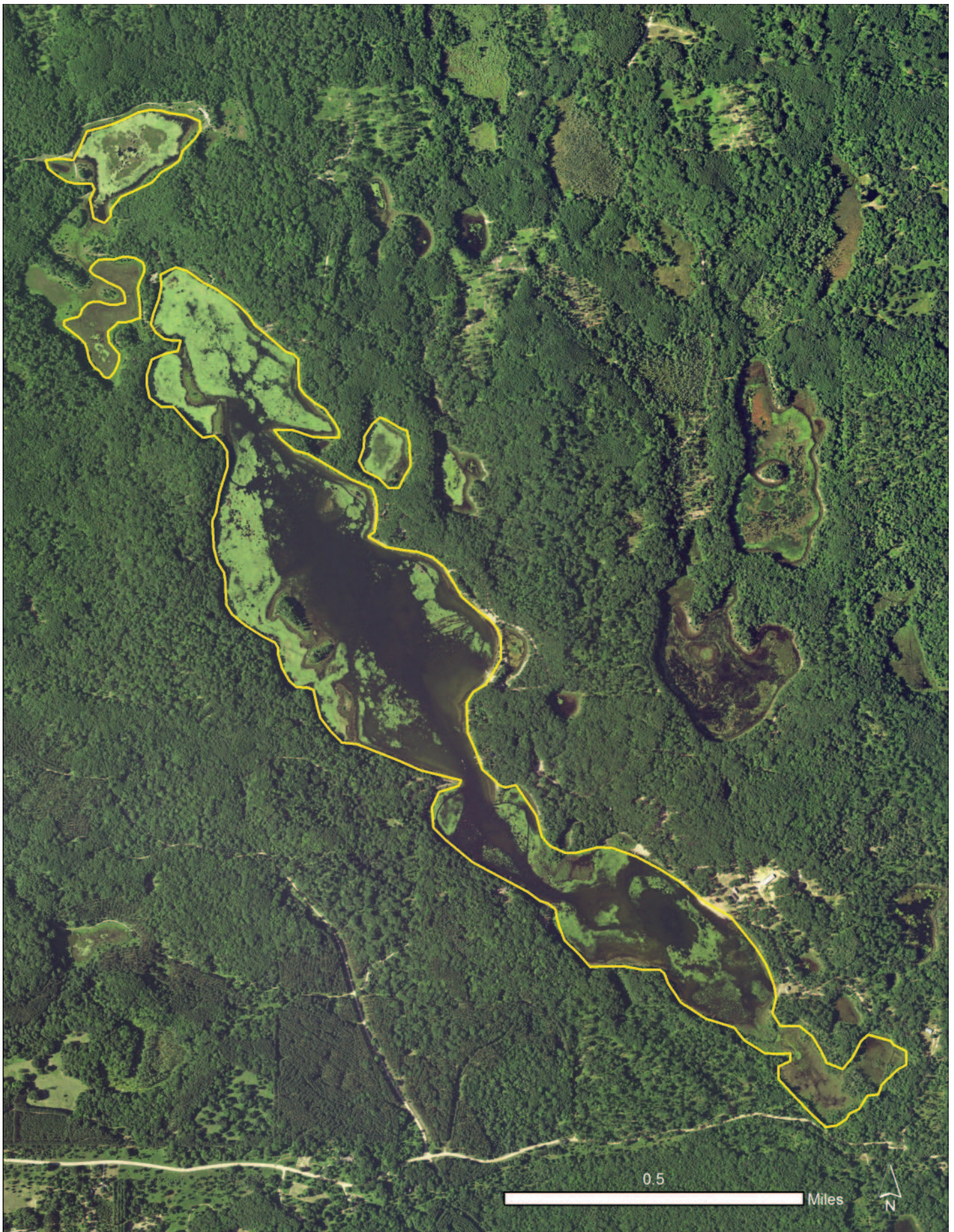
Cadillac Compartment 141

Surveyed Long Lake submergent marsh (EO ID 8353). Modified boundary of element occurrence and confirmed element occurrence rank of AB.



Long Lake submergent marsh. Photos by Joshua G. Cohen.





2016 aerial photograph of Long Lake submergent marsh.

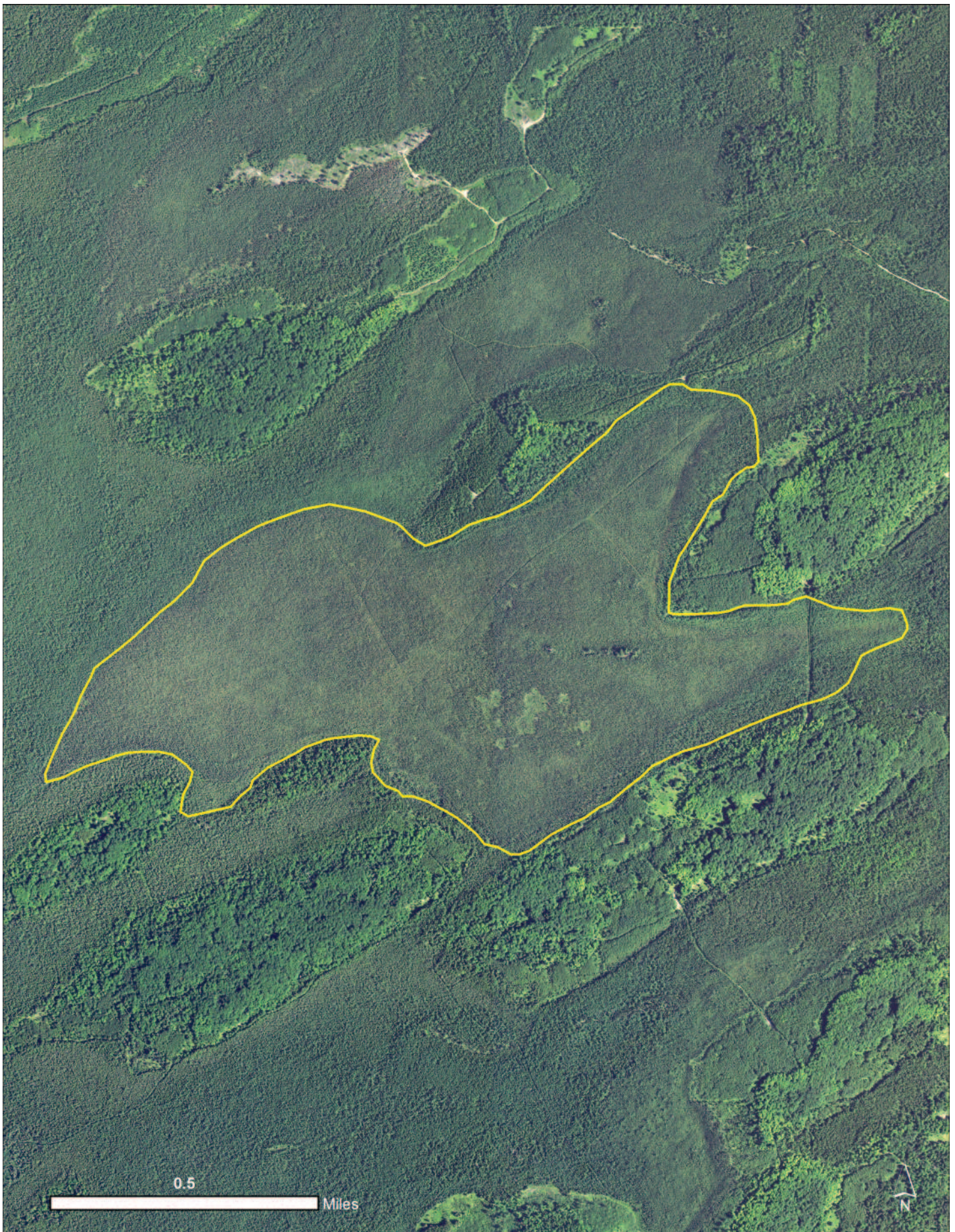
Escanaba Compartment 66

Surveyed Skidmore Branch poor conifer swamp (EO ID 16294). Following survey, significantly modified boundary of mapped poor conifer swamp excluding areas of rich conifer swamp. Confirmed element occurrence rank of B. Created new element occurrence for Skidmore Branch rich conifer swamp (EO ID 21311) and ranked it as a B-ranked EO.



Skidmore Branch poor conifer swamp. Photos by Joshua G. Cohen.



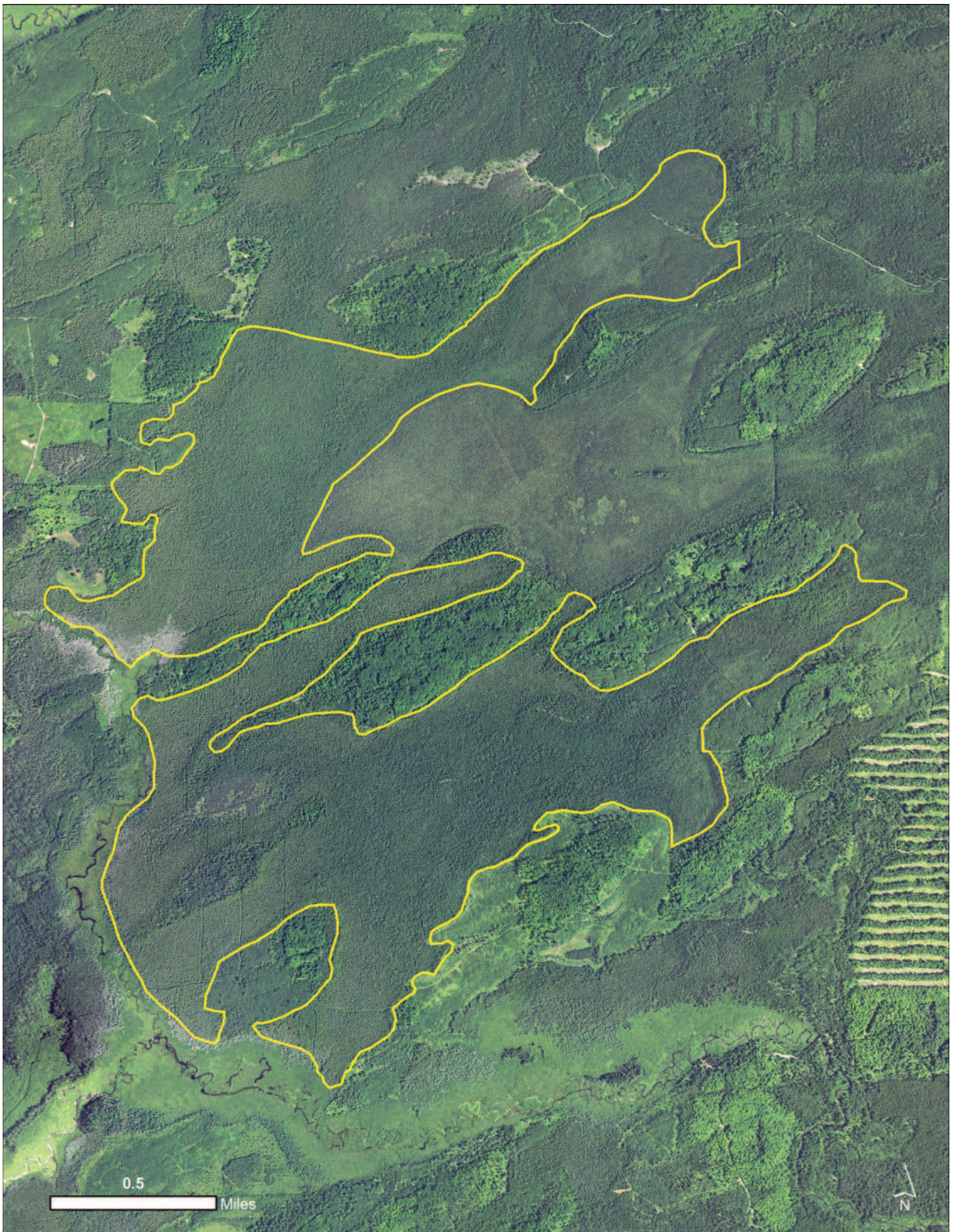


2016 aerial photograph of Skidmore Branch poor conifer swamp.



Skidmore Branch rich conifer swamp. Photos by Joshua G. Cohen.





2016 aerial photograph of Skidmore Branch rich conifer swamp.

Gaylord Compartment 3

Surveyed recently harvested stand for pale agoseris. Updated element occurrences for pale agoseris (EO ID 12989), Hill's thistle (EO ID 2660), and rough rescue (EO ID 79). Modified boundaries of element occurrences and confirmed element occurrence ranks (AB for pale agoseris, B for Hill's thistle, and AB for rough fescue).

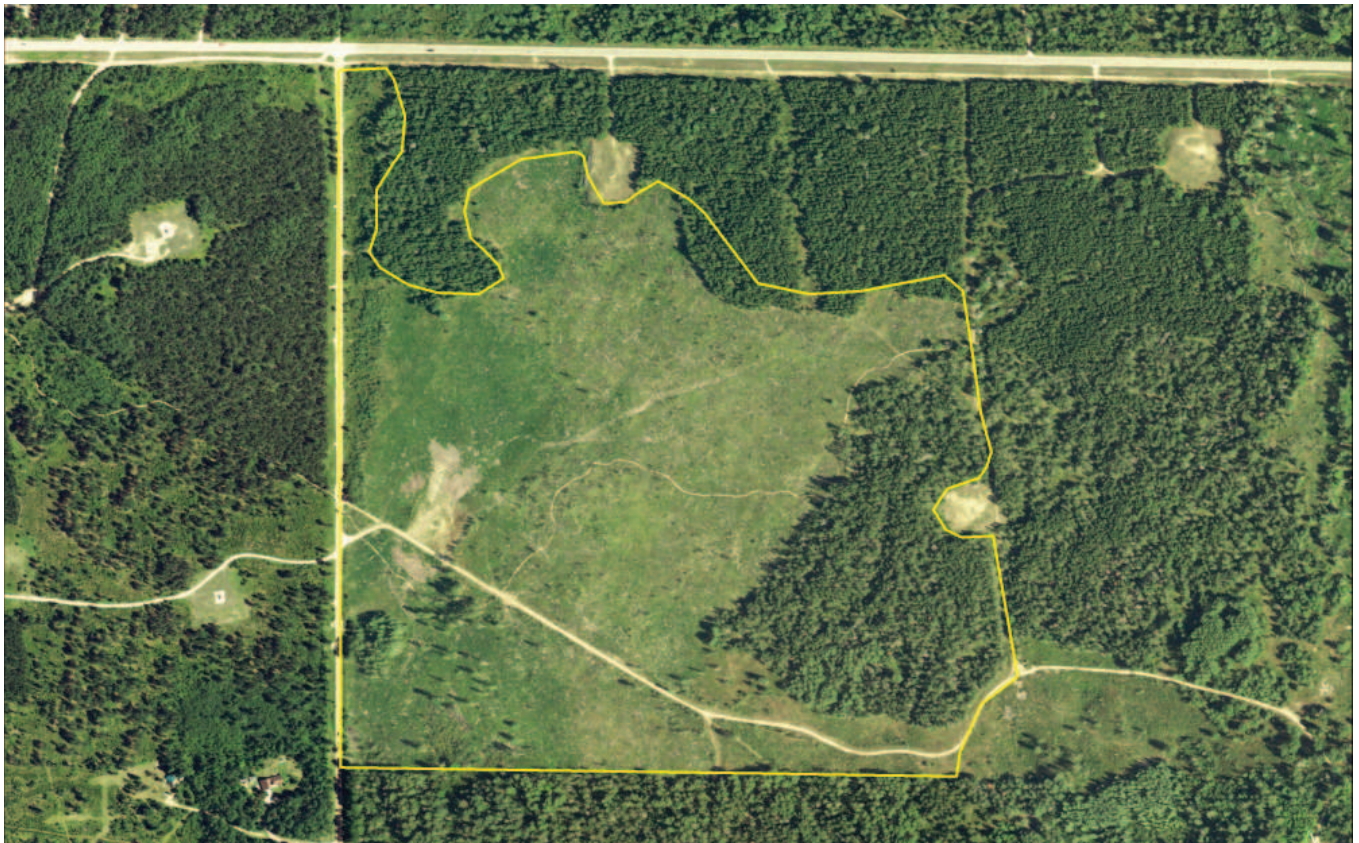


Hill's thistle (above) and pale agoseris (below), Gaylord Compartment 3. Photos by Joshua G. Cohen.





Rough fescue, Gaylord Compartment 3. Photo by Joshua G. Cohen.



2016 aerial photograph and newly mapped polygon for pale agoseris, Hill's thistle, and rough fescue element occurrences in Gaylord Compartment 3.

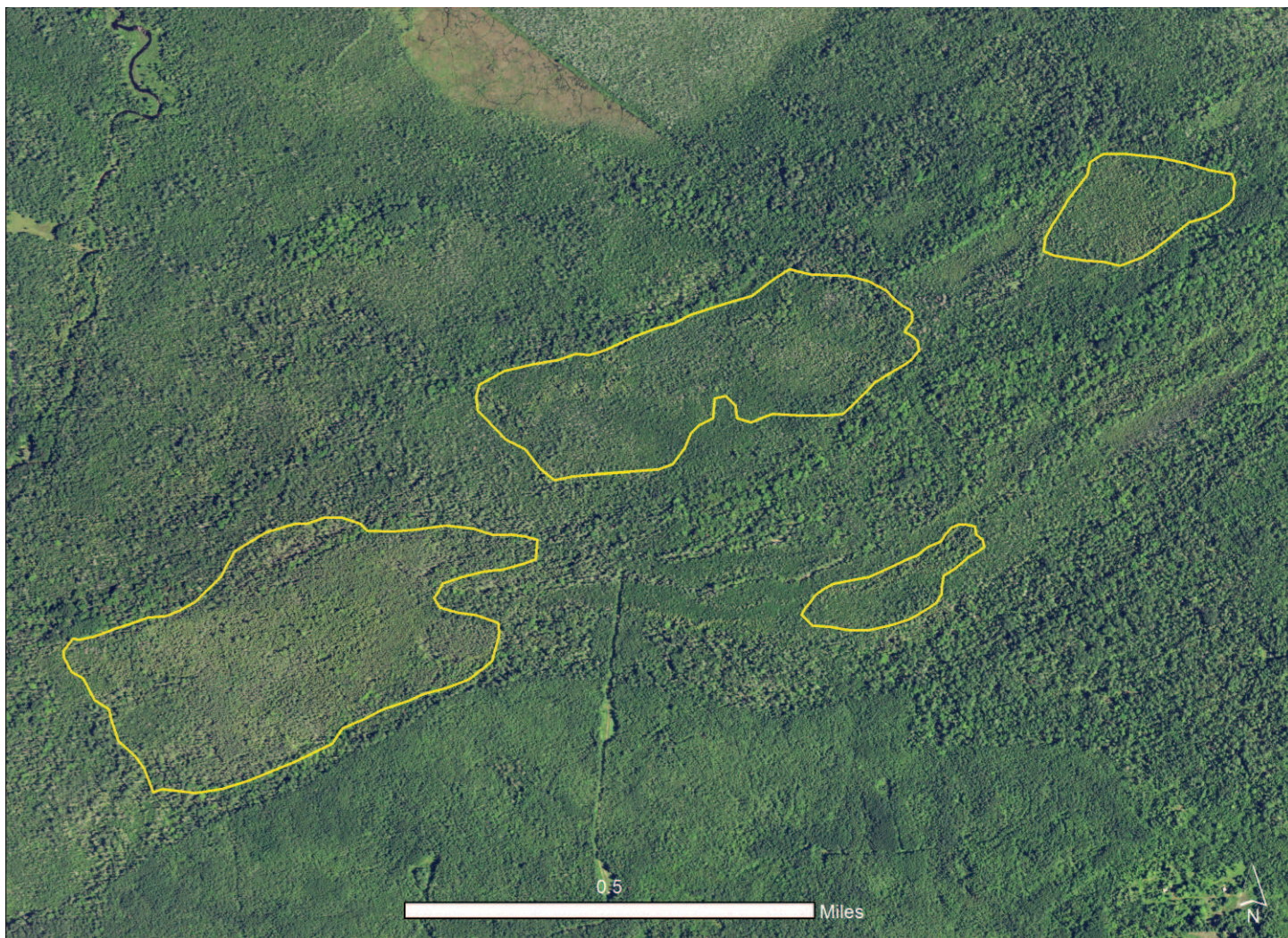
Gaylord Compartment 119 and 135

Surveyed Cecil Bay hardwood-conifer swamp (EO ID 1636). Re-classified element occurrence as rich conifer swamp and significantly modified the element occurrence boundary. Confirmed element occurrence rank of C.



Cecil Bay rich conifer swamp. Photos by Joshua G. Cohen.





2016 aerial photograph of Cecil Bay rich conifer swamp.

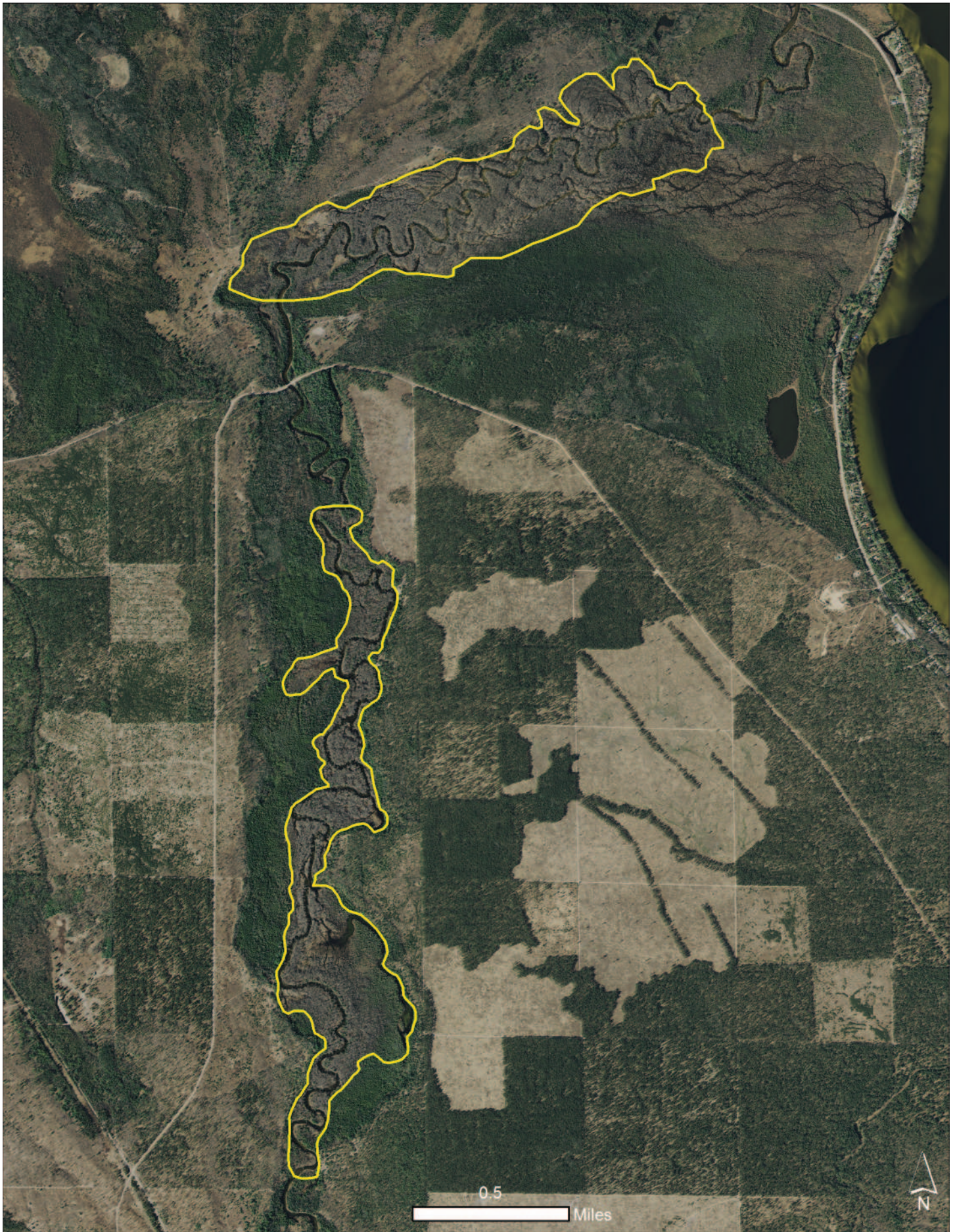
Gaylord Compartment 206 and 209

Surveyed additional floodplain adjacent to Black River floodplain forest (EO ID 18760). Modified boundary of element occurrence by increasing the acreage of mapped floodplain forest. Confirmed element occurrence rank of BC.



Black River floodplain forest. Photos by Joshua G. Cohen.





2016 aerial photograph of Black River floodplain forest.

Grayling Compartment 21

Surveyed recently harvested stand for rough fescue (EO ID 6461). Modified boundary of rough fescue element occurrence and confirmed element occurrence rank of B. Also documented new element occurrences for pale agoseris (EO ID 21318, B rank) and Hill's thistle (EO ID 21320, B rank).



Rough fescue, Grayling Compartment 21. Photos by Joshua G. Cohen.





Hill's thistle (above) and pale agoseris (below), Grayling Compartment 21. Photos by Joshua G. Cohen.





2016 aerial photograph of rough fescue (EO ID 6461) and Hill's thistle (EO ID 21320) element occurrences, Grayling Compartment 21.



2016 aerial photograph of pale agosers (EO ID 21318) element occurrence, Grayling Compartment 21.

Gwinn Compartment 209

Documented a new element occurrence mesic northern forest (EO ID 21317). The Compound is a BC-ranked mesic northern forest.



The Compound mesic northern forest. Photos by Jesse M. Lincoln (above) and Joshua G. Cohen (below).





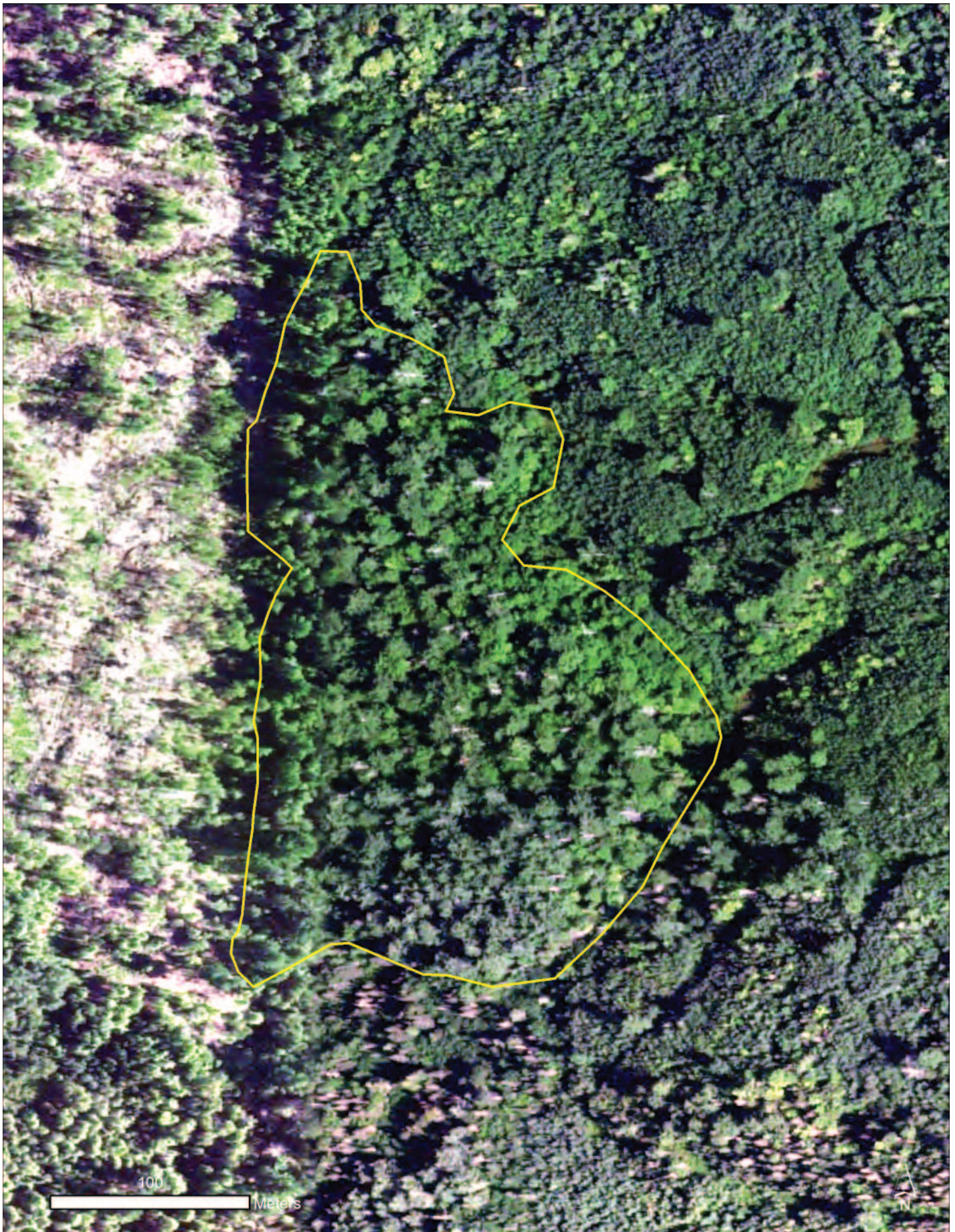
2016 aerial photograph of The Compound mesic northern forest.

Gwinn Compartment 212

Documented a new element occurrence dry-mesic northern forest (EO ID 21316). Caron Pines is a BC-ranked dry-mesic northern forest.



Caron Pines dry-mesic northern forest. Photo by Joshua G. Cohen.



2016 aerial photograph of Caron Pines dry-mesic northern forest.

Gwinn Compartment 253

Surveyed Voelker Plains poor conifer swamp (EO ID 16293). Modified the element occurrence boundary. Confirmed element occurrence rank of BC.



Voelker Plains poor conifer swamp. Photos by Joshua G. Cohen.



Gwinn Compartment 304

Surveyed Rocking Chair Lakes (Island Lake) mesic northern forest (EO ID 13528). Confirmed element occurrence rank of AB.

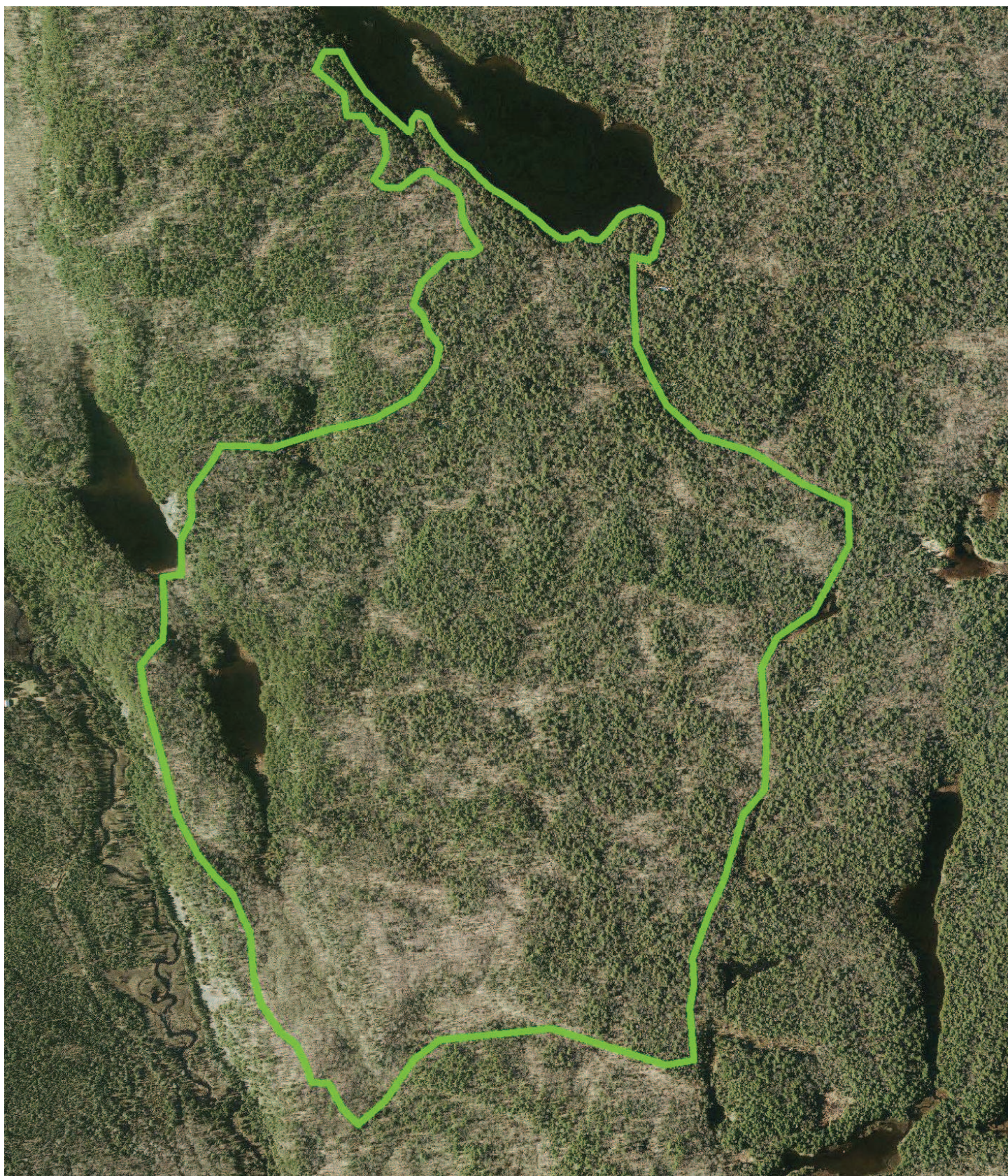


Rocking Chair Lakes (Island Lake) mesic northern forest). Photos by Joshua G. Cohen.





Rocking Chair Lakes (Island Lake) mesic northern forest. Photo by Joshua G. Cohen.



2016 aerial photograph of Rocking Chair Lakes (Island Lake) mesic northern forest.

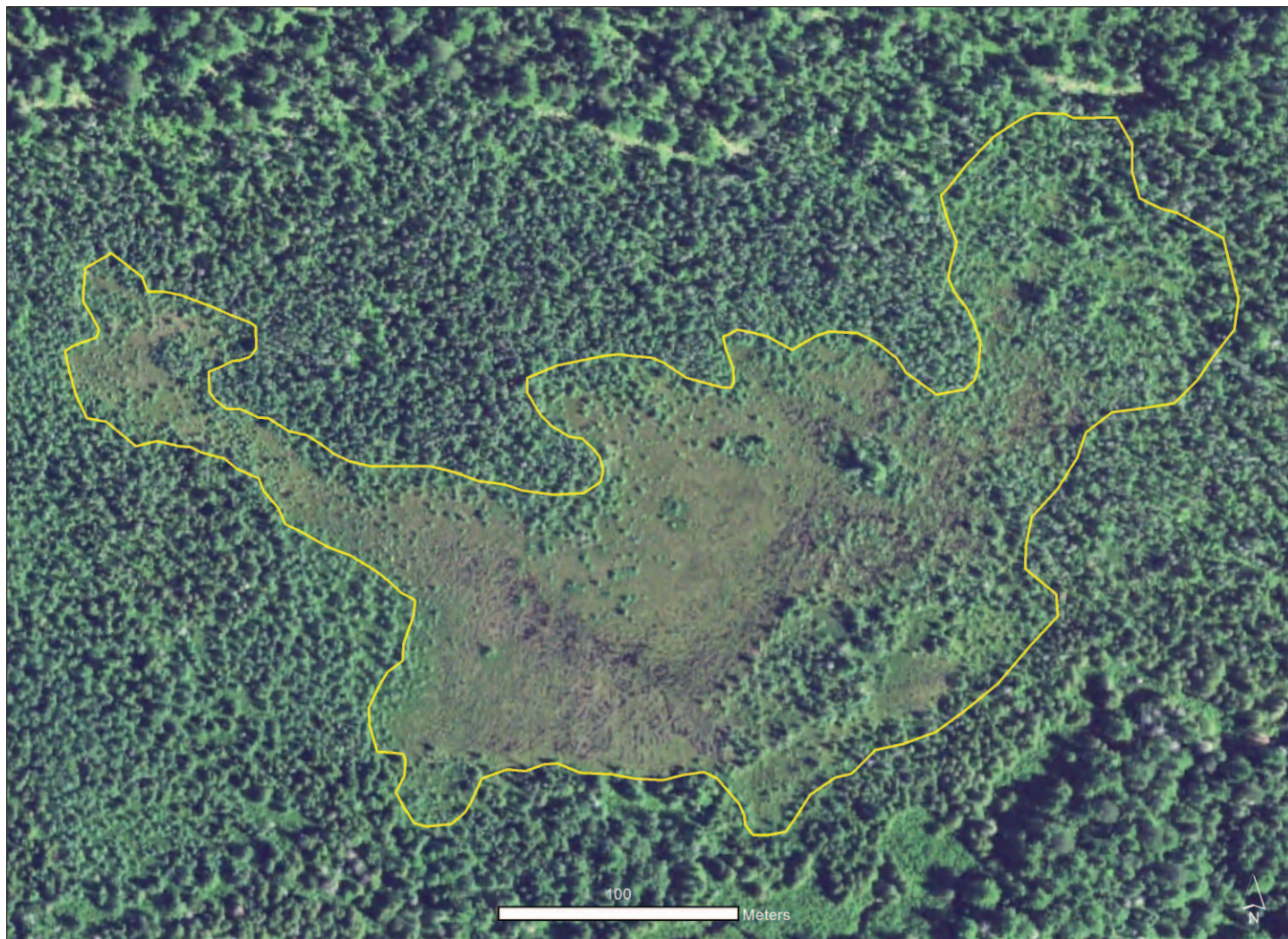
Newberry Compartment 25

Surveyed Lake Strangmoor North Branch patterned fen (EO ID 4903). Following survey, slightly modified boundary of patterned fen using recent aerial imagery. Increased element occurrence rank from C to B.



Lake Strangmoor North Branch patterned fen. Photos by Joshua G. Cohen.





2016 aerial photograph of Lake Stangmoor North Branch patterned fen.



Lake Stangmoor North Branch patterned fen. Photo by Joshua G. Cohen.

Sault Sainte Marie Compartment 55

Surveyed Kemp's Point Great Lakes marsh (EO ID 9877). Modified boundary of Great Lakes marsh using recent aerial imagery. Confirmed element occurrence rank of C.



Kemp's Point Great Lakes marsh. Photos by Joshua G. Cohen.





2016 aerial photograph of Kemp's Point Great Lakes marsh.

Sault Sainte Marie Compartment 63

Surveyed Hursley Creek, Charlotte River Great Lakes marsh (EO ID 4683). Modified boundary of Great Lakes marsh using recent aerial imagery. Confirmed element occurrence rank of C.



Hursley Creek, Charlotte River Great Lakes marsh. Photos by Joshua G. Cohen.





2016 aerial photograph of Hursley Creek, Charlotte River Great Lakes marsh.

Sault Sainte Marie Compartment 106

Surveyed Brevoort River Headwaters intermittent wetland (EO ID 8036). Modified boundary of intermittent wetland using recent aerial imagery. Confirmed element occurrence rank of C.

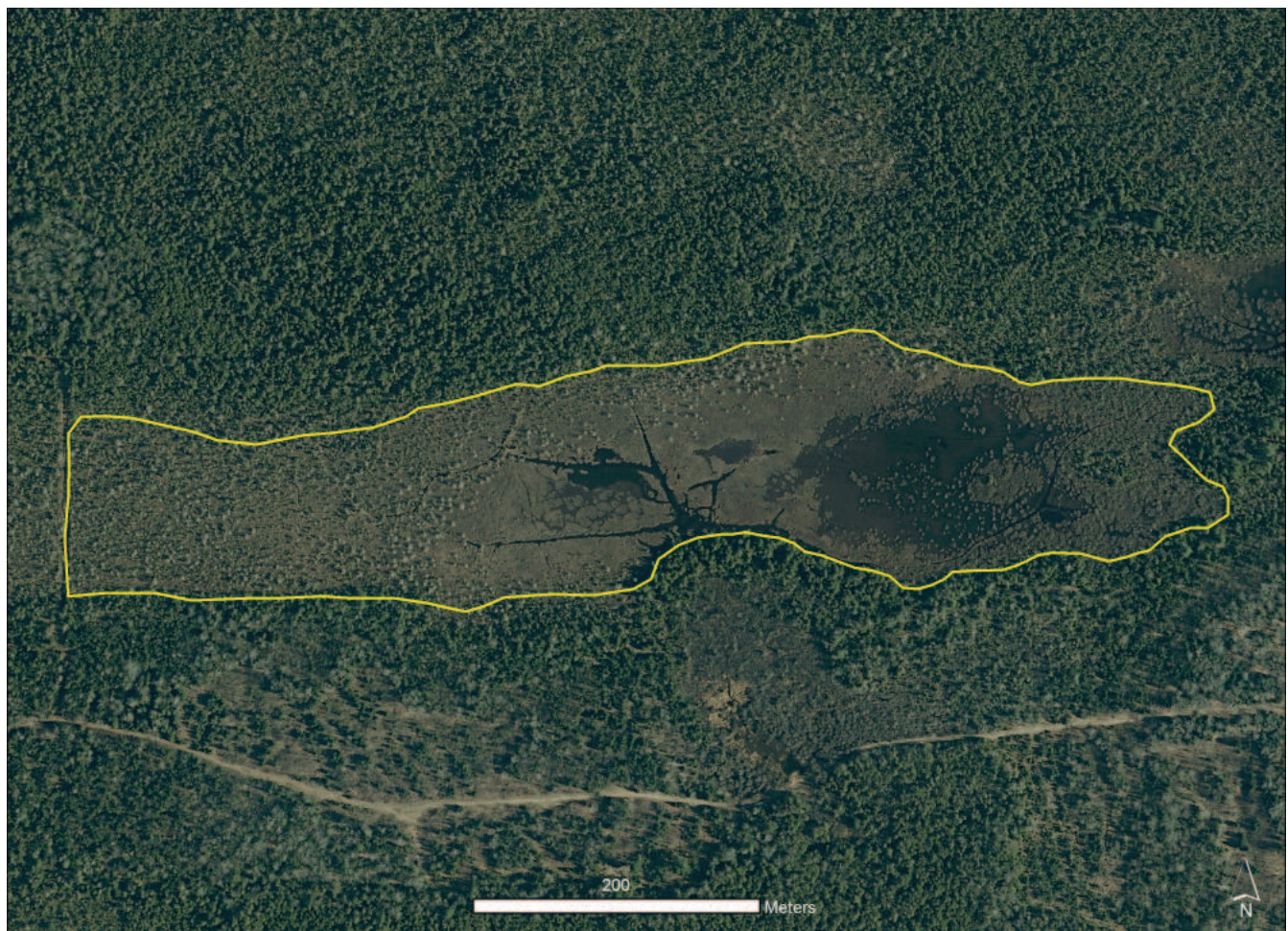


Brevoort River Headwater intermittent wetland. Photos by Joshua G. Cohen.





2016 aerial photographs of Brevoort River Headwaters intermittent wetland (above) and poor fen (below).



Sault Sainte Marie Compartment 114

Surveyed Brevoort River Headwaters poor fen (EO ID 2363). Modified boundary of poor fen using recent aerial imagery. Confirmed element occurrence rank of C.



Brevoort River Headwater poor fen. Photos by Joshua G. Cohen.



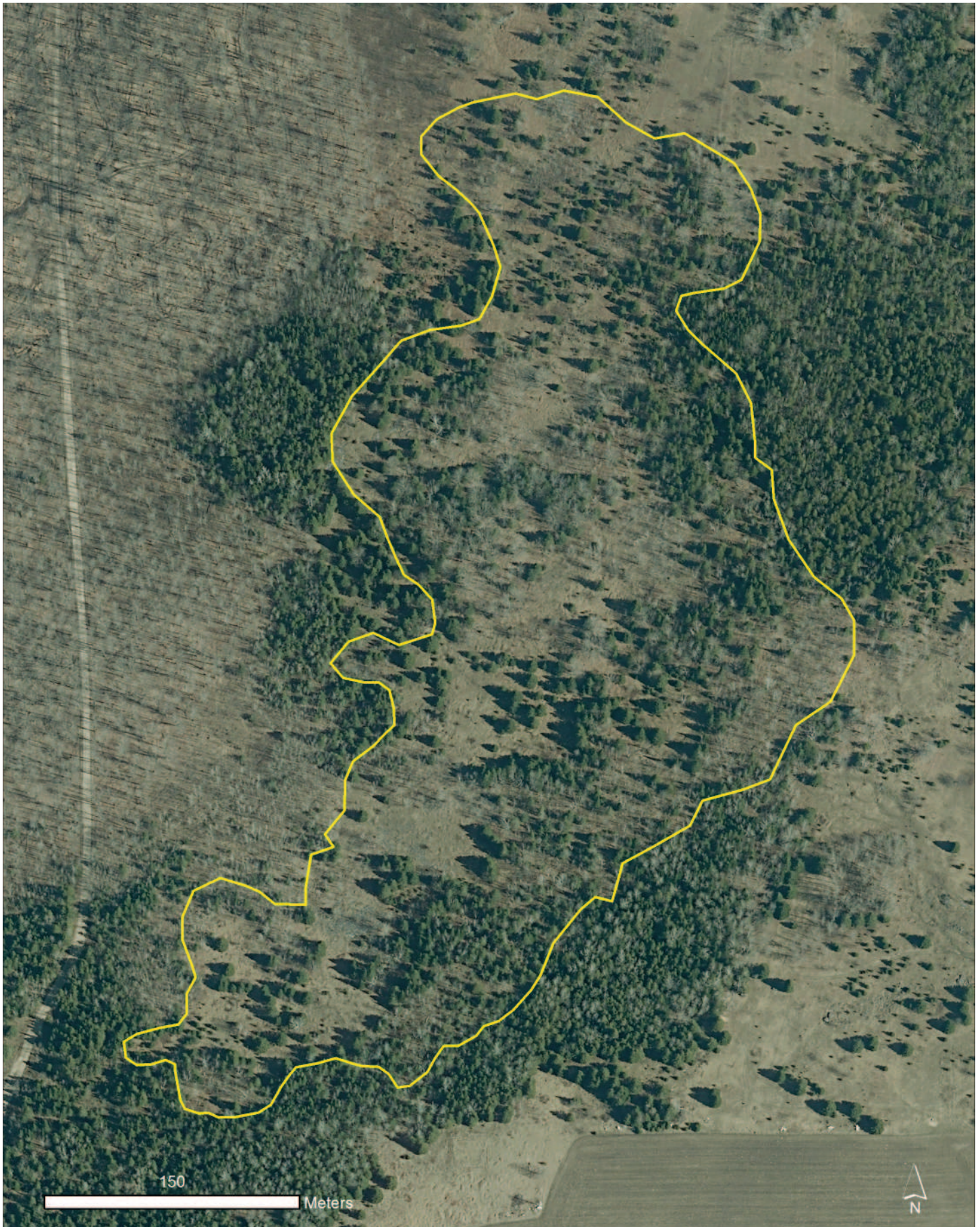
Sault Sainte Marie Compartment 177

Surveyed Big Knob Campground Road limestone bedrock glade (EO ID 2938). Modified boundary of limestone bedrock glade. Increased element occurrence rank from CD to C.



Big Knob Campground Road limestone bedrock glade Photos by Joshua G. Cohen.





2016 aerial photograph of Big Knob Campground Road limestone bedrock glade.

Shingleton Compartments 96 and 97

Surveyed Charbenou Lake limestone bedrock glade (EO ID 7436). Modified boundary of limestone bedrock glade. Confirmed element occurrence rank of C.



Charbenou Lake limestone bedrock glade. Photo by Joshua G. Cohen.



2016 aerial photograph of Charbenou Lake limestone bedrock glade.

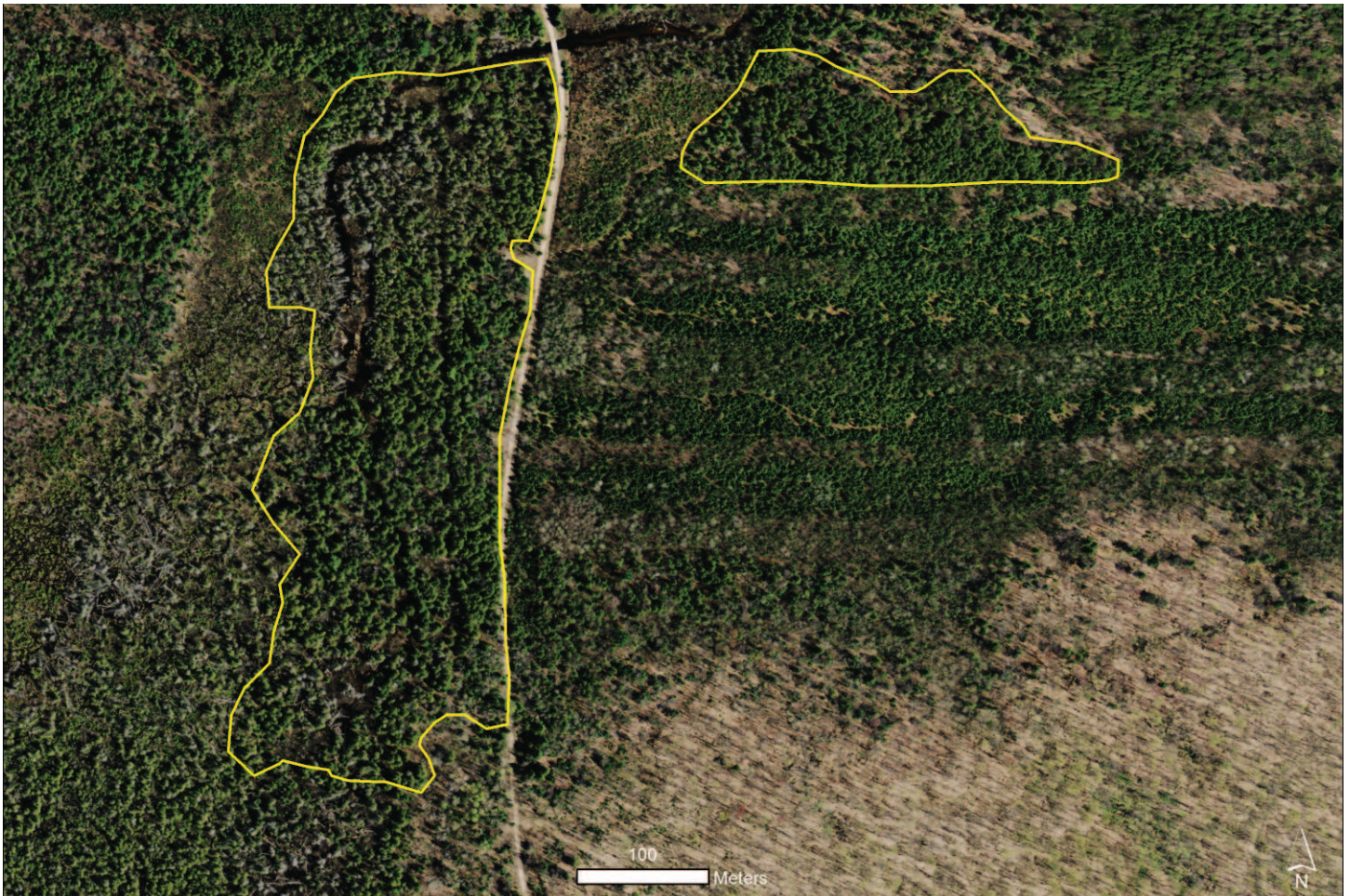
Shingletown Compartments 189 and 191

Surveyed Shingletown Cedars rich conifer swamp (EO ID 14552). Modified boundary of rich conifer swamp. Increased element occurrence rank from CD to C.



Shingletown Cedars rich conifer swamp. Photos by Joshua G. Cohen.





2016 aerial photograph of Shingletown Cedars rich conifer swamp.



Shingletown Cedars rich conifer swamp. Photo by Joshua G. Cohen.

Traverse City Compartment 47

Surveyed Fork's Swamp rich conifer swamp (EO ID 12281). Modified boundary of rich conifer swamp. Confirmed element occurrence rank of C.



Fork's Swamp rich conifer swamp. Photos by Joshua G. Cohen.





2016 aerial photograph of Fork's Swamp rich conifer swamp.